

RAZOR-SHARP GRINDING



CATALOG 2023

Razor Sharp Grinding began as a part time business with one manual tool & cutter grinder in the basement of Dennis & Eileen Reider's home in 1967.

With hard work and a commitment to excellence over the years we've grown and pictured below is our latest addition which was completed in early 2017. We now have 8 Walter CNC tool and cutter grinders and a Studer OD/ID grinder in this area



Quick Find Index



Produces the Cutting Edge for Industry

Description	Series	Page #
Hi-Performance Variable Pitch	RS504	1
2 Flute Std. Length CC	RS602	2
2 Flute Std. Length Ball Nose CC	RS602-BN	3
2 Flute Stub Length CC	RS612	8
2 Flute Stub Length Ball Nose CC	RS612-BN	8
2 Flute Long Length CC	RS662	16
2 Flute Long Length Ball Nose CC	RS662-BN	16
2 Flute Long Shank CC	RS672	18
2 Flute Long Shank Ball Nose CC	RS672-BN	18
2 Flute X Long Length CC	RS682	20
2 Flute X Long Length Ball Nose CC	RS682-BN	20
3 Flute Std. Length CC	RS603	4
3 Flute Std. Length Ball Nose CC	RS603-BN	5
3 Flute 45 Deg. Helix CC	RS645	13
3 Flute 60 Deg. Helix CC	RS660	15
4 Flute Std. Length CC	RS604	6
4 Flute Std. Length Ball Nose CC	RS604-BN	7
4 Flute Stub Length CC	RS614	9
4 Flute Stub Length Ball Nose CC	RS614-BN	9
4 Flute Stub Length D/E CC	RS624	10
4 Flute Stub Length Ball Nose D/E CC	RS624-BN	10
4 Flute Std. Length D/E CC	RS644	12
4 Flute Std. Length Ball Nose D/E CC	RS644-BN	12
4 Flute Long Length CC	RS664	17
4 Flute Long Length Ball Nose CC	RS664-BN	17
4 Flute Long Shank CC	RS674	19
4 Flute Long Shank Ball Nose CC	RS674-BN	19
4 Flute X Long Length CC	RS684	21
4 Flute X Long Length Ball Nose CC	RS684-BN	21
5 Flute standard, 45 Degree Helix	RS650	15
2 Flute Alum. Std. Length CC	RS640	11
2 Flute Single End Plastic Cutting	RS152	22
O Flute Single End Plastic Cutting	RS151-RS161	23
3 Flute Tapered End Mills 1/2° to 2°	RS7005	24
3 Flute Tapered End Mills 3° to 5°	RS7030	25
3 Flute Tapered End Mills 7° to 30°	RS7070	26
2 Flute Coarse Pitch Roughers CC	RS802-C	27
3 Flute Coarse Pitch Roughers	RS803-C	28
4 Flute Coarse Pitch Roughers CC	RS804-C	29
4 Flute Fine Pitch Roughers CC	RS804-F	30
4 Flute Thread Mills	RSTM	31
Chamfer Tools	CH	32
Carbide Reamers	TC	33,34,35
Speed and Feed Chart	Chart	36
Corner Radius/Chamfer Quote Template	Special	T1
Double Angle Shank Cutter Quote Template	Special	T2
Corner Rounding Cutter Quote Template	Special	T3
Dovetail Cutter Quote Template	Special	T4
Chamfer Cutter Quote Template	Special	T5
Taper End Mill Quote Template	Special	T6
"Lollipop" End Mill Quote Template	Special	T7
Angle Point End Mill Quote Template	Special	T8
Step Drills Quote Template	Special	T9

Hi-Performance

Series RS500

Stocked With AlTiN Coating Only
Center Cutting with Corner Radius
Anti-Vibration Geometry

Micro-Grain, Solid Carbide



Size	LOC	OAL	Shank Diameter	Number Flutes	Corner Radius	EDP Number	Price AlTiN
1/4	3/4	2-1/2	1/4	4	.015-.020	RS504-2500-015R	23.66
5/16	13/16	2-1/2	5/16	4	.015-.020	RS504-3125-015R	30.49
3/8	7/8	2-1/2	3/8	4	.015-.020	RS504-3750-015R	35.59
1/2	1	3	1/2	4	.030-.035	RS504-5000-03R	56.85
5/8	1-5/8	4	5/8	4	.030-.035	RS504-6250-03R	95.81
3/4	1-5/8	4	3/4	4	.030-.035	RS504-7500-03R	133.46
1	1-3/4	4	1	4	.030-.035	RS504-1000-03R	242.55

We have more offerings in this type of cutter. Please email or call to discuss

Phone: 610-326-2866



Tolerances:
Cutting Dia.: +0.000/-0.002
Shank Dia.: +0.0000/-0.0005

2-Flute Standard

Series RS602

Two Flute, Single End
Center Cutting

Micro-Grain, Solid Carbide



Size	LOC	OAL	Shank Diameter	EDP Number	Price	EDP Number	Price AlTiN
1/32	1/8	1-1/2	1/8	RS602-0312	8.10	RS602-0312-ALTIN	11.06
3/64	9/64	1-1/2	1/8	RS602-0469	6.94	RS602-0469-ALTIN	9.45
1/16	3/16	1-1/2	1/8	RS602-0625	6.98	RS602-0625-ALTIN	8.03
5/64	1/4	1-1/2	1/8	RS602-0781	7.20	RS602-0781-ALTIN	9.75
3/32	5/16	1-1/2	1/8	RS602-0938	6.34	RS602-0938-ALTIN	8.03
7/64	3/8	1-1/2	1/8	RS602-1094	6.60	RS602-1094-ALTIN	8.93
3MM	1/2	1-1/2	1/8	RS602-1181	6.60	RS602-1181-ALTIN	8.93
1/8	1/2	1-1/2	1/8	RS602-1250	6.04	RS602-1250-ALTIN	7.46
9/64	1/2	2	3/16	RS602-1406	8.81	RS602-1406-ALTIN	12.08
5/32	9/16	2	3/16	RS602-1562	8.93	RS602-1562-ALTIN	10.39
11/64	9/16	2	3/16	RS602-1719	8.51	RS602-1719-ALTIN	11.55
3/16	5/8	2	3/16	RS602-1875	8.29	RS602-1875-ALTIN	10.39
13/64	5/8	2-1/2	1/4	RS602-2031	12.04	RS602-2031-ALTIN	15.90
7/32	5/8	2-1/2	1/4	RS602-2188	12.26	RS602-2188-ALTIN	14.40
15/64	3/4	2-1/2	1/4	RS602-2344	13.91	RS602-2344-ALTIN	18.04
1/4	3/4	2-1/2	1/4	RS602-2500	10.16	RS602-2500-ALTIN	14.40
17/64	3/4	2-1/2	5/16	RS602-2656	18.30	RS602-2656-ALTIN	23.74
9/32	3/4	2-1/2	5/16	RS602-2812	18.30	RS602-2812-ALTIN	23.74
19/64	13/16	2-1/2	5/16	RS602-2969	18.30	RS602-2969-ALTIN	23.74
5/16	13/16	2-1/2	5/16	RS602-3125	13.28	RS602-3125-ALTIN	17.21
21/64	7/8	2-1/2	3/8	RS602-3281	20.63	RS602-3281-ALTIN	26.66
11/32	7/8	2-1/2	3/8	RS602-3438	20.63	RS602-3438-ALTIN	26.66
23/64	7/8	2-1/2	3/8	RS602-3594	20.63	RS602-3594-ALTIN	26.66
3/8	7/8	2-1/2	3/8	RS602-3750	15.75	RS602-3750-ALTIN	19.69
25/64	1	2-3/4	7/16	RS602-3906	27.00	RS602-3906-ALTIN	34.54
13/32	1	2-3/4	7/16	RS602-4062	27.00	RS602-4062-ALTIN	34.54
27/64	1	2-3/4	7/16	RS602-4219	27.86	RS602-4219-ALTIN	35.40
7/16	1	2-3/4	7/16	RS602-4375	24.19	RS602-4375-ALTIN	30.08
29/64	1	3	1/2	RS602-4531	40.13	RS602-4531-ALTIN	48.90
15/32	1	3	1/2	RS602-4688	40.13	RS602-4688-ALTIN	48.90
31/64	1	3	1/2	RS602-4844	40.13	RS602-4844-ALTIN	48.90
1/2	1	3	1/2	RS602-5000	29.18	RS602-5000-ALTIN	36.60
9/16	1-1/8	3-1/2	9/16	RS602-5625	54.90	RS602-5625-ALTIN	69.11
5/8	1-1/4	3-1/2	5/8	RS602-6250	55.80	RS602-6250-ALTIN	67.46
11/16	1-3/8	4	3/4	RS602-6875	85.93	RS602-6875-ALTIN	110.69
3/4	1-1/2	4	3/4	RS602-7500	78.00	RS602-7500-ALTIN	95.74
7/8	1-1/2	4	7/8	RS602-8750	143.36	RS602-8750-ALTIN	172.09
1	1-1/2	4	1	RS602-1000	131.33	RS602-1000-ALTIN	160.05

Phone: 610-326-2866



Tolerances:
Cutting Dia.: +0.000/-0.002
Shank Dia.: +0.0000/-0.0005

2-Flute Standard Ball Nose

Series RS602-BN

Two Flute, Single End, Ball Nose
Center Cutting

Micro-Grain, Solid Carbide



Produces the Cutting Edge for Industry



Size	LOC	OAL	Shank Diameter	EDP Number	Price	EDP Number	Price AlTiN
1/32	1/8	1-1/2	1/8	RS602-0312-BN	8.74	RS602-0312-BN-ATN	11.40
3/64	9/64	1-1/2	1/8	RS602-0469-BN	8.74	RS602-0469-BN-ATN	11.40
1/16	3/16	1-1/2	1/8	RS602-0625-BN	8.10	RS602-0625-BN-ATN	10.95
5/64	1/4	1-1/2	1/8	RS602-0781-BN	8.10	RS602-0781-BN-ATN	10.95
3/32	5/16	1-1/2	1/8	RS602-0938-BN	8.51	RS602-0938-BN-ATN	11.55
7/64	3/8	1-1/2	1/8	RS602-1094-BN	8.51	RS602-1094-BN-ATN	11.55
1/8	1/2	1-1/2	1/8	RS602-1250-BN	7.80	RS602-1250-BN-ATN	10.58
9/64	1/2	2	3/16	RS602-1406-BN	11.33	RS602-1406-BN-ATN	14.89
5/32	9/16	2	3/16	RS602-1562-BN	11.33	RS602-1562-BN-ATN	14.89
11/64	9/16	2	3/16	RS602-1719-BN	11.33	RS602-1719-BN-ATN	14.89
3/16	5/8	2	3/16	RS602-1875-BN	10.20	RS602-1875-BN-ATN	13.76
13/64	5/8	2-1/2	1/4	RS602-2031-BN	14.85	RS602-2031-BN-ATN	19.39
7/32	5/8	2-1/2	1/4	RS602-2188-BN	14.85	RS602-2188-BN-ATN	18.94
15/64	3/4	2-1/2	1/4	RS602-2344-BN	14.85	RS602-2344-BN-ATN	19.39
1/4	3/4	2-1/2	1/4	RS602-2500-BN	14.44	RS602-2500-BN-ATN	18.04
17/64	3/4	2-1/2	5/16	RS602-2656-BN	18.75	RS602-2656-BN-ATN	24.19
9/32	3/4	2-1/2	5/16	RS602-2812-BN	18.79	RS602-2812-BN-ATN	24.23
19/64	13/16	2-1/2	5/16	RS602-2969-BN	20.40	RS602-2969-BN-ATN	25.43
5/16	13/16	2-1/2	5/16	RS602-3125-BN	17.29	RS602-3125-BN-ATN	22.43
21/64	7/8	2-1/2	3/8	RS602-3281-BN	23.74	RS602-3281-BN-ATN	30.56
11/32	7/8	2-1/2	3/8	RS602-3438-BN	24.94	RS602-3438-BN-ATN	31.39
23/64	7/8	2-1/2	3/8	RS602-3594-BN	23.74	RS602-3594-BN-ATN	30.19
3/8	7/8	2-1/2	3/8	RS602-3750-BN	18.60	RS602-3750-BN-ATN	25.05
25/64	1	2-3/4	7/16	RS602-3906-BN	32.18	RS602-3906-BN-ATN	39.68
13/32	1	2-3/4	7/16	RS602-4062-BN	32.33	RS602-4062-BN-ATN	39.86
27/64	1	2-3/4	7/16	RS602-4219-BN	32.18	RS602-4219-BN-ATN	39.68
7/16	1	2-3/4	7/16	RS602-4375-BN	27.38	RS602-4375-BN-ATN	34.88
29/64	1	3	1/2	RS602-4531-BN	42.41	RS602-4531-BN-ATN	51.19
15/32	1	3	1/2	RS602-4688-BN	42.41	RS602-4688-BN-ATN	51.19
31/64	1	3	1/2	RS602-4844-BN	42.41	RS602-4844-BN-ATN	51.19
1/2	1	3	1/2	RS602-5000-BN	37.73	RS602-5000-BN-ATN	46.50
9/16	1-1/8	3-1/2	9/16	RS602-5625-BN	57.53	RS602-5625-BN-ATN	68.44
5/8	1-1/4	3-1/2	5/8	RS602-6250-BN	60.71	RS602-6250-BN-ATN	71.63
11/16	1-3/8	4	3/4	RS602-6875-BN	98.55	RS602-6875-BN-ATN	128.43
3/4	1-1/2	4	3/4	RS602-7500-BN	89.48	RS602-7500-BN-ATN	111.08
7/8	1-1/2	4	7/8	RS602-8750-BN	173.25	RS602-8750-BN-ATN	188.93
1	1-1/2	4	1	RS602-1000-BN	159.79	RS602-1000-BN-ATN	178.58

Phone: 610-326-2866



Tolerances:
Cutting Dia.: +0.000/-0.002
Shank Dia.: +0.0000/-0.0005

3-Flute Standard

Series RS603

Three Flute, Single End
Center Cutting

Micro-Grain, Solid Carbide



Size	LOC	OAL	Shank Diameter	EDP Number	Price	EDP Number	Price AlTiN
1/16	3/16	1-1/2	1/8	RS603-0625	6.98	RS603-0625-ALTIN	8.03
5/64	3/16	1-1/2	1/8	RS603-0781	7.20	RS603-0781-ALTIN	9.75
3/32	5/16	1-1/2	1/8	RS603-0938	6.34	RS603-0938-ALTIN	8.03
7/64	7/16	1-1/2	1/8	RS603-1094	6.60	RS603-1094-ALTIN	8.93
1/8	1/2	1-1/2	1/8	RS603-1250	6.04	RS603-1250-ALTIN	7.46
9/64	1/2	2	3/16	RS603-1406	8.81	RS603-1406-ALTIN	12.08
5/32	9/16	2	3/16	RS603-1562	8.93	RS603-1562-ALTIN	10.39
11/64	5/8	2	3/16	RS603-1719	8.51	RS603-1719-ALTIN	11.55
3/16	5/8	2	3/16	RS603-1875	8.29	RS603-1875-ALTIN	10.39
13/64	5/8	2-1/2	1/4	RS603-2031	12.04	RS603-2031-ALTIN	15.90
7/32	5/8	2-1/2	1/4	RS603-2188	12.26	RS603-2188-ALTIN	14.40
15/64	3/4	2-1/2	1/4	RS603-2344	13.91	RS603-2344-ALTIN	18.04
1/4	3/4	2-1/2	1/4	RS603-2500	10.16	RS603-2500-ALTIN	14.40
17/64	3/4	2-1/2	5/16	RS603-2656	18.30	RS603-2656-ALTIN	23.74
9/32	3/4	2-1/2	5/16	RS603-2812	18.30	RS603-2812-ALTIN	23.74
19/64	13/16	2-1/2	5/16	RS603-2969	18.30	RS603-2969-ALTIN	23.74
5/16	13/16	2-1/2	5/16	RS603-3125	13.28	RS603-3125-ALTIN	17.21
3/8	7/8	2-1/2	3/8	RS603-3750	15.75	RS603-3750-ALTIN	19.69
7/16	1	2-3/4	7/16	RS603-4375	24.19	RS603-4375-ALTIN	30.08
1/2	1	3	1/2	RS603-5000	29.18	RS603-5000-ALTIN	36.60
9/16	1-1/8	3-1/2	9/16	RS603-5625	54.90	RS603-5625-ALTIN	69.11
5/8	1-1/4	3-1/2	5/8	RS603-6250	55.80	RS603-6250-ALTIN	67.46
3/4	1-1/2	4	3/4	RS603-7500	78.00	RS603-7500-ALTIN	95.74
7/8	1-1/2	4	7/8	RS603-8750	143.36	RS603-8750-ALTIN	172.09
1	1-1/2	4	1	RS603-1000	131.33	RS603-1000-ALTIN	160.05

being discontinued and are limited to remaining stock

Phone: 610-326-2866



Tolerances:
Cutting Dia.: +0.000/-0.002
Shank Dia.: +0.0000/-0.0005

3-Flute Standard Ball Nose

Series RS603-BN

Three Flute, Single End, Ball Nose
Center Cutting

Micro-Grain, Solid Carbide



Size	LOC	OAL	Shank Diameter	EDP Number	Price	EDP Number	Price AlTiN
1/16	3/16	1-1/2	1/8	RS603-0625-BN	8.10	RS603-0625-BN-ATN	10.95
3/32	5/16	1-1/2	1/8	RS603-0938-BN	8.51	RS603-0938-BN-ATN	11.55
1/8	1/2	1-1/2	1/8	RS603-1250-BN	7.80	RS603-1250-BN-ATN	10.58
5/32	9/16	2	3/16	RS603-1562-BN	11.33	RS603-1562-BN-ATN	14.89
3/16	5/8	2	3/16	RS603-1875-BN	10.20	RS603-1875-BN-ATN	13.76
13/64	5/8	2-1/2	1/4	RS603-2031-BN	14.85	RS603-2031-BN-ATN	19.39
7/32	5/8	2-1/2	1/4	RS603-2188-BN	14.85	RS603-2188-BN-ATN	18.94
15/64	3/4	2-1/2	1/4	RS603-2344-BN	14.85	RS603-2344-BN-ATN	19.39
1/4	3/4	2-1/2	1/4	RS603-2500-BN	14.44	RS603-2500-BN-ATN	18.04
9/32	3/4	2-1/2	5/16	RS603-2812-BN	18.79	RS603-2812-BN-ATN	24.23
19/64	13/16	2-1/2	5/16	RS603-2969-BN	20.40	RS603-2969-BN-ATN	25.43
5/16	13/16	2-1/2	5/16	RS603-3125-BN	17.29	RS603-3125-BN-ATN	22.43
3/8	7/8	2-1/2	3/8	RS603-3750-BN	18.60	RS603-3750-BN-ATN	25.05
7/16	1	2-3/4	7/16	RS603-4375-BN	27.38	RS603-4375-BN-ATN	34.88
1/2	1	3	1/2	RS603-5000-BN	37.73	RS603-5000-BN-ATN	46.50
9/16	1-1/8	3-1/2	9/16	RS603-5625-BN	57.53	RS603-5625-BN-ATN	68.44
5/8	1-1/4	3-1/2	5/8	RS603-6250-BN	60.71	RS603-6250-BN-ATN	71.63
3/4	1-1/2	4	3/4	RS603-7500-BN	89.48	RS603-7500-BN-ATN	111.08

being discontinued and are limited to remaining stock

Phone: 610-326-2866



Tolerances:
Cutting Dia.: +0.000/-0.002
Shank Dia.: +0.0000/-0.0005

4-Flute Standard

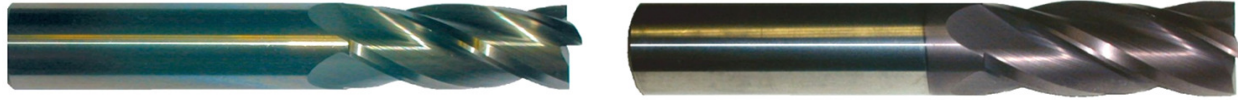
Series RS604

Four Flute, Single End
Center Cutting

Micro-Grain, Solid Carbide



Produces the Cutting Edge for Industry



Size	LOC	OAL	Shank Diameter	EDP Number	Price	EDP Number	Price AlTiN
1/32	1/8	1-1/2	1/8	RS604-0312	8.10	RS604-0312-ALTIN	11.06
3/64	9/64	1-1/2	1/8	RS604-0469	6.94	RS604-0469-ALTIN	9.45
1/16	3/16	1-1/2	1/8	RS604-0625	6.98	RS604-0625-ALTIN	8.03
5/64	1/4	1-1/2	1/8	RS604-0781	7.20	RS604-0781-ALTIN	9.75
3/32	5/16	1-1/2	1/8	RS604-0938	6.34	RS604-0938-ALTIN	8.03
7/64	3/8	1-1/2	1/8	RS604-1094	6.60	RS604-1094-ALTIN	8.93
3MM	1/2	1-1/2	1/8	RS604-1181	6.60	RS604-1181-ALTIN	8.93
1/8	1/2	1-1/2	1/8	RS604-1250	6.04	RS604-1250-ALTIN	7.46
9/64	1/2	2	3/16	RS604-1406	8.81	RS604-1406-ALTIN	12.08
5/32	9/16	2	3/16	RS604-1562	8.93	RS604-1562-ALTIN	10.39
11/64	9/16	2	3/16	RS604-1719	8.51	RS604-1719-ALTIN	11.55
3/16	5/8	2	3/16	RS604-1875	8.29	RS604-1875-ALTIN	10.39
13/64	5/8	2-1/2	1/4	RS604-2031	12.04	RS604-2031-ALTIN	15.90
7/32	5/8	2-1/2	1/4	RS604-2188	12.26	RS604-2188-ALTIN	14.40
15/64	3/4	2-1/2	1/4	RS604-2344	13.91	RS604-2344-ALTIN	18.04
1/4	3/4	2-1/2	1/4	RS604-2500	10.16	RS604-2500-ALTIN	14.40
17/64	3/4	2-1/2	5/16	RS604-2656	18.30	RS604-2656-ALTIN	23.74
9/32	3/4	2-1/2	5/16	RS604-2812	18.30	RS604-2812-ALTIN	23.74
19/64	13/16	2-1/2	5/16	RS604-2969	18.30	RS604-2969-ALTIN	23.74
5/16	13/16	2-1/2	5/16	RS604-3125	13.28	RS604-3125-ALTIN	17.21
21/64	7/8	2-1/2	3/8	RS604-3281	20.63	RS604-3281-ALTIN	26.66
11/32	7/8	2-1/2	3/8	RS604-3438	20.63	RS604-3438-ALTIN	26.66
23/64	7/8	2-1/2	3/8	RS604-3594	20.63	RS604-3594-ALTIN	26.66
3/8	7/8	2-1/2	3/8	RS604-3750	15.75	RS604-3750-ALTIN	19.69
25/64	1	2-3/4	7/16	RS604-3906	27.00	RS604-3906-ALTIN	34.54
13/32	1	2-3/4	7/16	RS604-4062	27.00	RS604-4062-ALTIN	34.54
27/64	1	2-3/4	7/16	RS604-4219	27.86	RS604-4219-ALTIN	35.40
7/16	1	2-3/4	7/16	RS604-4375	24.19	RS604-4375-ALTIN	30.08
29/64	1	3	1/2	RS604-4531	40.13	RS604-4531-ALTIN	48.90
15/32	1	3	1/2	RS604-4688	40.13	RS604-4688-ALTIN	48.90
31/64	1	3	1/2	RS604-4844	40.13	RS604-4844-ALTIN	48.90
1/2	1	3	1/2	RS604-5000	29.18	RS604-5000-ALTIN	36.60
1/2	1-1/4	3	1/2	RS604-5001	29.18	RS604-5001-ALTIN	36.60
9/16	1-1/8	3-1/2	9/16	RS604-5625	54.90	RS604-5625-ALTIN	69.11
5/8	1-1/4	3-1/2	5/8	RS604-6250	55.80	RS604-6250-ALTIN	67.46
11/16	1-3/8	4	3/4	RS604-6875	85.93	RS604-6875-ALTIN	110.69
3/4	1-1/2	4	3/4	RS604-7500	78.00	RS604-7500-ALTIN	95.74
7/8	1-1/2	4	7/8	RS604-8750	143.36	RS604-8750-ALTIN	172.09
1	1-1/2	4	1	RS604-1000	131.33	RS604-1000-ALTIN	160.05

Phone: 610-326-2866



Tolerances:
Cutting Dia.: +0.000/-0.002
Shank Dia.: +0.0000/-0.0005

4-Flute Standard Ball Nose

Series RS604-BN

Four Flute, Single End, Ball Nose
Center Cutting

Micro-Grain, Solid Carbide



Produces the Cutting Edge for Industry



Size	LOC	OAL	Shank Diameter	EDP Number	Price	EDP Number	Price AlTiN
1/32	1/8	1-1/2	1/8	RS604-0312-BN	8.74	RS604-0312-BN-ATN	11.40
3/64	9/64	1-1/2	1/8	RS604-0469-BN	8.74	RS604-0469-BN-ATN	11.40
1/16	3/16	1-1/2	1/8	RS604-0625-BN	8.10	RS604-0625-BN-ATN	10.95
5/64	1/4	1-1/2	1/8	RS604-0781-BN	8.10	RS604-0781-BN-ATN	10.95
3/32	5/16	1-1/2	1/8	RS604-0938-BN	8.51	RS604-0938-BN-ATN	11.55
7/64	3/8	1-1/2	1/8	RS604-1094-BN	8.51	RS604-1094-BN-ATN	11.55
1/8	1/2	1-1/2	1/8	RS604-1250-BN	7.80	RS604-1250-BN-ATN	10.58
9/64	1/2	2	3/16	RS604-1406-BN	11.33	RS604-1406-BN-ATN	14.89
5/32	9/16	2	3/16	RS604-1562-BN	11.33	RS604-1562-BN-ATN	14.89
11/64	9/16	2	3/16	RS604-1719-BN	11.33	RS604-1719-BN-ATN	14.89
3/16	5/8	2	3/16	RS604-1875-BN	10.20	RS604-1875-BN-ATN	13.76
13/64	5/8	2-1/2	1/4	RS604-2031-BN	14.85	RS604-2031-BN-ATN	18.94
7/32	5/8	2-1/2	1/4	RS604-2188-BN	14.85	RS604-2188-BN-ATN	18.94
15/64	3/4	2-1/2	1/4	RS604-2344-BN	14.85	RS604-2344-BN-ATN	18.94
1/4	3/4	2-1/2	1/4	RS604-2500-BN	14.44	RS604-2500-BN-ATN	18.04
17/64	3/4	2-1/2	5/16	RS604-2656-BN	18.75	RS604-2656-BN-ATN	24.19
9/32	3/4	2-1/2	5/16	RS604-2812-BN	18.79	RS604-2812-BN-ATN	24.23
19/64	13/16	2-1/2	5/16	RS604-2969-BN	20.40	RS604-2969-BN-ATN	25.84
5/16	13/16	2-1/2	5/16	RS604-3125-BN	17.29	RS604-3125-BN-ATN	22.43
21/64	7/8	2-1/2	3/8	RS604-3281-BN	23.74	RS604-3281-BN-ATN	30.56
11/32	7/8	2-1/2	3/8	RS604-3438-BN	24.94	RS604-3438-BN-ATN	31.39
23/64	7/8	2-1/2	3/8	RS604-3594-BN	23.74	RS604-3594-BN-ATN	30.56
3/8	7/8	2-1/2	3/8	RS604-3750-BN	18.60	RS604-3750-BN-ATN	25.05
25/64	1	2-3/4	7/16	RS604-3906-BN	32.18	RS604-3906-BN-ATN	39.68
13/32	1	2-3/4	7/16	RS604-4062-BN	32.33	RS604-4062-BN-ATN	39.86
27/64	1	2-3/4	7/16	RS604-4219-BN	32.18	RS604-4219-BN-ATN	39.68
7/16	1	2-3/4	7/16	RS604-4375-BN	27.38	RS604-4375-BN-ATN	34.88
29/64	1	3	1/2	RS604-4531-BN	42.41	RS604-4531-BN-ATN	52.09
15/32	1	3	1/2	RS604-4688-BN	42.41	RS604-4688-BN-ATN	52.09
31/64	1	3	1/2	RS604-4844-BN	42.41	RS604-4844-BN-ATN	51.19
1/2	1	3	1/2	RS604-5000-BN	37.73	RS604-5000-BN-ATN	46.50
9/16	1-1/8	3-1/2	9/16	RS604-5625-BN	57.53	RS604-5625-BN-ATN	68.44
5/8	1-1/4	3-1/2	5/8	RS604-6250-BN	60.71	RS604-6250-BN-ATN	74.59
11/16	1-3/8	4	3/4	RS604-6875-BN	98.55	RS604-6875-BN-ATN	128.43
3/4	1-1/2	4	3/4	RS604-7500-BN	89.48	RS604-7500-BN-ATN	111.08
7/8	1-1/2	4	7/8	RS604-8750-BN	173.25	RS604-8750-BN-ATN	209.78
1	1-1/2	4	1	RS604-1000-BN	159.79	RS604-1000-BN-ATN	196.20

Phone: 610-326-2866



Tolerances:
Cutting Dia.: +0.000/-0.002
Shank Dia.: +0.0000/-0.0005

2-Flute Stub, Std. & Ball Nose

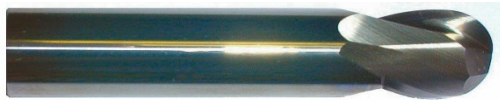
Series RS612/612-BN

Two Flute, Single End Std. & Ball Nose
Center Cutting

Micro-Grain, Solid Carbide



Size	LOC	OAL	Shank Diameter	EDP Number	Price	EDP Number	Price AlTiN
1/16	1/8	1-1/2	1/8	RS612-0625	5.36	RS612-0625-ALTIN	7.01
5/64	5/32	1-1/2	1/8	RS612-0781	9.00	RS612-0781-ALTIN	11.33
3/32	3/16	1-1/2	1/8	RS612-0938	5.36	RS612-0938-ALTIN	7.01
7/64	7/32	1-1/2	1/8	RS612-1094	5.36	RS612-1094-ALTIN	7.01
1/8	1/4	1-1/2	1/8	RS612-1250	5.14	RS612-1250-ALTIN	6.68
9/64	9/32	2	3/16	RS612-1406	8.44	RS612-1406-ALTIN	10.54
5/32	5/16	2	3/16	RS612-1562	8.44	RS612-1562-ALTIN	10.54
3/16	3/8	2	3/16	RS612-1875	7.91	RS612-1875-ALTIN	9.75
7/32	7/16	2	1/4	RS612-2188	10.65	RS612-2188-ALTIN	12.83
1/4	1/2	2	1/4	RS612-2500	9.34	RS612-2500-ALTIN	11.70
5/16	1/2	2	5/16	RS612-3125	12.60	RS612-3125-ALTIN	16.58
3/8	5/8	2	3/8	RS612-3750	16.39	RS612-3750-ALTIN	20.36
7/16	5/8	2-1/2	7/16	RS612-4375	20.40	RS612-4375-ALTIN	25.46
1/2	5/8	2-1/2	1/2	RS612-5000	25.80	RS612-5000-ALTIN	32.29
5/8	3/4	3	5/8	RS612-6250	54.56	RS612-6250-ALTIN	64.76
3/4	1	3	3/4	RS612-7500	76.05	RS612-7500-ALTIN	88.16



Size	LOC	OAL	Shank Diameter	EDP Number	Price	EDP Number	Price AlTiN
1/16	1/8	1-1/2	1/8	RS612-0625-BN	6.94	RS612-0625-BN-ATN	8.96
5/64	5/32	1-1/2	1/8	RS612-0781-BN	11.21	RS612-0781-BN-ATN	14.18
3/32	3/16	1-1/2	1/8	RS612-0938-BN	6.94	RS612-0938-BN-ATN	8.96
7/64	7/32	1-1/2	1/8	RS612-1094-BN	6.94	RS612-1094-BN-ATN	8.96
1/8	1/4	1-1/2	1/8	RS612-1250-BN	6.56	RS612-1250-BN-ATN	8.51
9/64	9/32	2	3/16	RS612-1406-BN	10.95	RS612-1406-BN-ATN	14.18
5/32	5/16	2	3/16	RS612-1562-BN	10.95	RS612-1562-BN-ATN	14.18
3/16	3/8	2	3/16	RS612-1875-BN	10.28	RS612-1875-BN-ATN	13.28
7/32	7/16	2	1/4	RS612-2188-BN	13.91	RS612-2188-BN-ATN	17.85
1/4	1/2	2	1/4	RS612-2500-BN	13.20	RS612-2500-BN-ATN	16.61
5/16	1/2	2	5/16	RS612-3125-BN	16.39	RS612-3125-BN-ATN	21.15
3/8	5/8	2	3/8	RS612-3750-BN	21.15	RS612-3750-BN-ATN	26.03
7/16	5/8	2-1/2	7/16	RS612-4375-BN	26.59	RS612-4375-BN-ATN	32.55
1/2	5/8	2-1/2	1/2	RS612-5000-BN	33.30	RS612-5000-BN-ATN	42.11
5/8	3/4	3	5/8	RS612-6250-BN	63.64	RS612-6250-BN-ATN	74.25
3/4	1	3	3/4	RS612-7500-BN	97.20	RS612-7500-BN-ATN	103.35



Phone: 610-326-2866

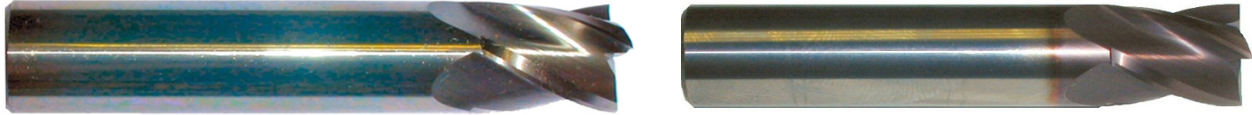
Tolerances:
Cutting Dia.: +0.000/-0.002
Shank Dia.: +0.0000/-0.0005

4-Flute Stub, Std. & Ball Nose

Series RS614/614-BN

Four Flute, Single End Std. & Ball Nose
Center Cutting

Micro-Grain, Solid Carbide



Size	LOC	OAL	Shank Diameter	EDP Number	Price	EDP Number	Price AlTiN
1/16	1/8	1-1/2	1/8	RS614-0625	5.36	RS614-0625-ALTIN	7.01
5/64	5/32	1-1/2	1/8	RS614-0781	9.00	RS614-0781-ALTIN	11.33
3/32	3/16	1-1/2	1/8	RS614-0938	5.36	RS614-0938-ALTIN	7.01
7/64	7/32	1-1/2	1/8	RS614-1094	5.36	RS614-1094-ALTIN	7.01
1/8	1/4	1-1/2	1/8	RS614-1250	5.14	RS614-1250-ALTIN	6.68
9/64	9/32	2	3/16	RS614-1406	8.44	RS614-1406-ALTIN	10.54
5/32	5/16	2	3/16	RS614-1562	8.44	RS614-1562-ALTIN	10.54
3/16	3/8	2	3/16	RS614-1875	7.91	RS614-1875-ALTIN	9.94
7/32	7/16	2	1/4	RS614-2188	10.65	RS614-2188-ALTIN	13.35
1/4	1/2	2	1/4	RS614-2500	9.34	RS614-2500-ALTIN	11.70
5/16	1/2	2	5/16	RS614-3125	12.60	RS614-3125-ALTIN	16.58
3/8	5/8	2	3/8	RS614-3750	16.39	RS614-3750-ALTIN	20.36
7/16	5/8	2-1/2	7/16	RS614-4375	20.40	RS614-4375-ALTIN	25.46
1/2	5/8	2-1/2	1/2	RS614-5000	25.80	RS614-5000-ALTIN	32.29
5/8	3/4	3	5/8	RS614-6250	54.56	RS614-6250-ALTIN	64.76
3/4	1	3	3/4	RS614-7500	76.05	RS614-7500-ALTIN	89.70



Size	LOC	OAL	Shank Diameter	EDP Number	Price	EDP Number	Price AlTiN
1/16	1/8	1-1/2	1/8	RS614-0625-BN	6.94	RS614-0625-BN-ATN	8.96
5/64	5/32	1-1/2	1/8	RS614-0781-BN	11.21	RS614-0781-BN-ATN	14.18
3/32	3/16	1-1/2	1/8	RS614-0938-BN	6.94	RS614-0938-BN-ATN	8.96
7/64	7/32	1-1/2	1/8	RS614-1094-BN	6.94	RS614-1094-BN-ATN	8.96
1/8	1/4	1-1/2	1/8	RS614-1250-BN	6.56	RS614-1250-BN-ATN	8.51
9/64	9/32	2	3/16	RS614-1406-BN	10.95	RS614-1406-BN-ATN	14.18
5/32	5/16	2	3/16	RS614-1562-BN	10.95	RS614-1562-BN-ATN	14.18
3/16	3/8	2	3/16	RS614-1875-BN	10.28	RS614-1875-BN-ATN	13.28
7/32	7/16	2	1/4	RS614-2188-BN	13.91	RS614-2188-BN-ATN	17.85
1/4	1/2	2	1/4	RS614-2500-BN	13.20	RS614-2500-BN-ATN	17.21
5/16	1/2	2	5/16	RS614-3125-BN	16.39	RS614-3125-BN-ATN	21.15
3/8	5/8	2	3/8	RS614-3750-BN	21.15	RS614-3750-BN-ATN	26.03
7/16	5/8	2-1/2	7/16	RS614-4375-BN	26.59	RS614-4375-BN-ATN	32.55
1/2	5/8	2-1/2	1/2	RS614-5000-BN	33.30	RS614-5000-BN-ATN	42.11
5/8	3/4	3	5/8	RS614-6250-BN	63.64	RS614-6250-BN-ATN	74.25
3/4	1	3	3/4	RS614-7500-BN	97.20	RS614-7500-BN-ATN	118.05



Phone: 610-326-2866

Tolerances:
Cutting Dia.: +0.000/-0.002
Shank Dia.: +0.0000/-0.0005

4-Flute Stub, Double End, Std. & Ballnose

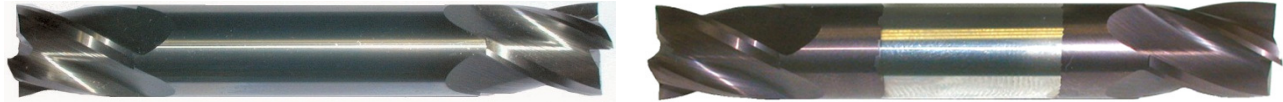
Series RS624/624-BN

Four Flute, Double End Std. & Ball Nose
Center Cutting

Micro-Grain, Solid Carbide

RAZOR - SHARP
GRINDING

Produces the Cutting Edge for Industry



Size	LOC	OAL	Shank Diameter	EDP Number	Price	EDP Number	Price AlTiN
1/16	1/8	1-1/2	1/8	RS624-0625	10.79	RS624-0625-ALTiN	13.99
3/32	3/16	1-1/2	1/8	RS624-0938	11.25	RS624-0938-ALTiN	14.36
1/8	1/4	1-1/2	1/8	RS624-1250	8.32	RS624-1250-ALTiN	12.15
5/32	5/16	2	3/16	RS624-1562	12.05	RS624-1562-ALTiN	16.24
3/16	3/8	2	3/16	RS624-1875	12.05	RS624-1875-ALTiN	16.24
7/32	1/2	2-1/2	1/4	RS624-2188	14.72	RS624-2188-ALTiN	21.94
1/4	1/2	2-1/2	1/4	RS624-2500	14.72	RS624-2500-ALTiN	21.94
5/16	1/2	2-1/2	5/16	RS624-3125	17.28	RS624-3125-ALTiN	27.83
3/8	1/2	2-1/2	3/8	RS624-3750	20.13	RS624-3750-ALTiN	30.71
7/16	9/16	2-3/4	7/16	RS624-4375	25.62	RS624-4375-ALTiN	42.56
1/2	5/8	3	1/2	RS624-5000	40.51	RS624-5000-ALTiN	55.13



Size	LOC	OAL	Shank Diameter	EDP Number	Price	EDP Number	Price AlTiN
1/16	1/8	1-1/2	1/8	RS624-0625-BN	14.48	RS624-0625-BN-ATN	17.44
3/32	3/16	1-1/2	1/8	RS624-0938-BN	15.00	RS624-0938-BN-ATN	17.93
1/8	1/4	1-1/2	1/8	RS624-1250-BN	11.36	RS624-1250-BN-ATN	14.48
5/32	5/16	2	3/16	RS624-1562-BN	16.12	RS624-1562-BN-ATN	19.46
3/16	3/8	2	3/16	RS624-1875-BN	16.12	RS624-1875-BN-ATN	19.46
7/32	1/2	2-1/2	1/4	RS624-2188-BN	20.31	RS624-2188-BN-ATN	26.74
1/4	1/2	2-1/2	1/4	RS624-2500-BN	20.31	RS624-2500-BN-ATN	26.74
5/16	1/2	2-1/2	5/16	RS624-3125-BN	24.18	RS624-3125-BN-ATN	33.56
3/8	1/2	2-1/2	3/8	RS624-3750-BN	27.75	RS624-3750-BN-ATN	37.50
7/16	9/16	2-3/4	7/16	RS624-4375-BN	36.38	RS624-4375-BN-ATN	51.34
1/2	5/8	3	1/2	RS624-5000-BN	55.01	RS624-5000-BN-ATN	68.93

Phone: 610-326-2866



Tolerances:
Cutting Dia.: +0.000/-0.002
Shank Dia.: +0.0000/-0.0005

2-Flute - Aluminum Geometry

Series RS640

Two Flute, Single End
Center Cutting

Micro-Grain, Solid Carbide



Size	LOC	OAL	Shank Diameter	EDP Number	Price	EDP Number	Price ZrN
1/8	1/2	1-1/2	1/8	RS640-1250	10.74	RS640-1250-ZRN	12.45
3/16	5/8	2	3/16	RS640-1875	15.41	RS640-1875-ZRN	17.29
1/4	3/4	2-1/2	1/4	RS640-2500	20.79	RS640-2500-ZRN	24.15
1/4	1-1/2	4	1/4	RS640-2501	28.63	RS640-2501-ZRN	33.11
5/16	13/16	2-1/2	5/16	RS640-3125	24.03	RS640-3125-ZRN	28.65
5/16	1-5/8	4	5/16	RS640-3126	39.38	RS640-3126-ZRN	45.08
3/8	7/8	2-1/2	3/8	RS640-3750	25.69	RS640-3750-ZRN	30.34
3/8	1-3/4	4	3/8	RS640-3751	48.05	RS640-3751-ZRN	54.00
1/2	1	3	1/2	RS640-5000	40.38	RS640-5000-ZRN	47.93
1/2	2	4	1/2	RS640-5001	66.98	RS640-5001-ZRN	75.86
1/2	1-1/4	3	1/2	RS640-5002	40.38	RS640-5002-ZRN	47.93
5/8	1-1/4	3-1/2	5/8	RS640-6250	85.84	RS640-6250-ZRN	96.26
5/8	2-1/4	5	5/8	RS640-6251	151.69	RS640-6251-ZRN	164.33
3/4	1-1/2	4	3/4	RS640-7500	124.89	RS640-7500-ZRN	138.23
3/4	2-1/4	5	3/4	RS640-7501	163.53	RS640-7501-ZRN	178.46
1	2-1/4	5	1	RS640-1000	207.43	RS640-1000-ZRN	226.50
1	3	6	1	RS640-1001	258.88	RS640-1001-ZRN	289.46

Phone: 610-326-2866



Tolerances:
Cutting Dia.: +0.000/-0.002
Shank Dia.: +0.0000/-0.0005

4-Flute, Double End, Std. & Ballnose

Series RS644/644-BN

Four Flute, Double End Std. & Ball Nose
Center Cutting

Micro-Grain, Solid Carbide



Size	LOC	OAL	Shank Diameter	EDP Number	Price	EDP Number	Price AlTiN
1/8	3/8	3	3/8	RS644-1250	46.63	RS644-1250-ALTIN	48.00
5/32	7/16	3	3/8	RS644-1562	46.14	RS644-1562-ALTIN	48.00
3/16	1/2	3-1/2	3/8	RS644-1875	46.14	RS644-1875-ALTIN	48.00
7/32	9/16	3-1/2	3/8	RS644-2188	43.87	RS644-2188-ALTIN	49.13
1/4	5/8	3-1/2	3/8	RS644-2500	43.87	RS644-2500-ALTIN	50.81
5/16	3/4	3-1/2	3/8	RS644-3125	45.09	RS644-3125-ALTIN	52.73
3/8	3/4	3-1/2	3/8	RS644-3750	45.09	RS644-3750-ALTIN	52.73
7/16	7/8	4	1/2	RS644-4375	62.99	RS644-4375-ALTIN	78.45
1/2	1	4	1/2	RS644-5000	73.16	RS644-5000-ALTIN	88.13



Size	LOC	OAL	Shank Diameter	EDP Number	Price	EDP Number	Price AlTiN
1/8	3/8	3	3/8	RS644-1250-BN	56.18	RS644-1250-BN-ATN	57.11
5/32	7/16	3	3/8	RS644-1562-BN	55.69	RS644-1562-BN-ATN	57.11
3/16	1/2	3-1/2	3/8	RS644-1875-BN	55.69	RS644-1875-BN-ATN	57.11
7/32	9/16	3-1/2	3/8	RS644-2188-BN	54.26	RS644-2188-BN-ATN	59.03
1/4	5/8	3-1/2	3/8	RS644-2500-BN	54.26	RS644-2500-BN-ATN	59.03
5/16	3/4	3-1/2	3/8	RS644-3125-BN	58.62	RS644-3125-BN-ATN	65.59
3/8	3/4	3-1/2	3/8	RS644-3750-BN	58.62	RS644-3750-BN-ATN	65.59
7/16	7/8	4	1/2	RS644-4375-BN	74.37	RS644-4375-BN-ATN	83.29
1/2	1	4	1/2	RS644-5000-BN	82.53	RS644-5000-BN-ATN	97.01

Phone: 610-326-2866



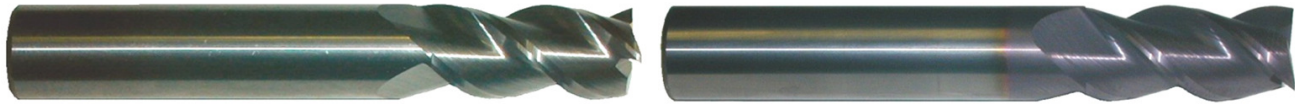
Tolerances:
Cutting Dia.: +0.000/-0.002
Shank Dia.: +0.0000/-0.0005

3-Flute Standard, 45 Degree Helix

Series RS645

Three Flute, Single End, 45 degree Helix
Center Cutting

Micro-Grain, Solid Carbide



Size	LOC	OAL	Shank Diameter	EDP Number	Price	EDP Number	Price AlTiN
1/16	3/16	1-1/2	1/8	RS645-0625	6.52	RS645-0625-ALTIN	8.12
3/32	5/16	1-1/2	1/8	RS645-0938	6.52	RS645-0938-ALTIN	8.12
1/8	1/2	1-1/2	1/8	RS645-1250	6.52	RS645-1250-ALTIN	8.12
5/32	9/16	2	3/16	RS645-1562	9.64	RS645-1562-ALTIN	11.44
3/16	5/8	2	3/16	RS645-1875	9.64	RS645-1875-ALTIN	11.44
7/32	5/8	2-1/2	1/4	RS645-2188	13.03	RS645-2188-ALTIN	16.24
1/4	3/4	2-1/2	1/4	RS645-2500	12.61	RS645-2500-ALTIN	15.84
9/32	3/4	2-1/2	5/16	RS645-2812	15.36	RS645-2812-ALTIN	19.64
5/16	13/16	2-1/2	5/16	RS645-3125	15.69	RS645-3125-ALTIN	19.98
3/8	7/8	2-1/2	3/8	RS645-3750	20.98	RS645-3750-ALTIN	25.27
7/16	1	2-3/4	7/16	RS645-4375	26.37	RS645-4375-ALTIN	33.62
1/2	1	3	1/2	RS645-5000	36.58	RS645-5000-ALTIN	43.82
9/16	1-1/8	3-1/2	9/16	RS645-5625	49.31	RS645-5625-ALTIN	58.76
5/8	1-1/4	3-1/2	5/8	RS645-6250	57.19	RS645-6250-ALTIN	66.63
11/16	1-3/8	4	3/4	RS645-6875	88.64	RS645-6875-ALTIN	100.63
3/4	1-1/2	4	3/4	RS645-7500	90.95	RS645-7500-ALTIN	102.94
7/8	1-1/2	4	7/8	RS645-8750	150.28	RS645-8750-ALTIN	165.88
1	1-1/2	4	1	RS645-1000	166.67	RS645-1000-ALTIN	182.28

Phone: 610-326-2866



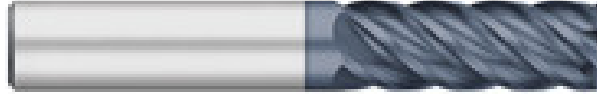
Tolerances:
Cutting Dia.: +0.000/-0.002
Shank Dia.: +0.0000/-0.0005

5-Flute Std, 45° Helix, AlTiN Coated

Series RS650

Steel, Stainless, Titanium, & High Temp Alloys
Eccentric OD, Center Cutting, AlTiN Coated

Micro-Grain, Solid Carbide



Size	LOC	OAL	Shank Diameter	EDP Number	Price AlTiN
1/8	1/4	1 1/2	1/8	RS650-1250-1	14.81
1/8	1/2	1 1/2	1/8	RS650-1250-2	16.36
3/16	3/8	2	3/16	RS650-1875-1	16.00
3/16	5/8	2	3/16	RS650-1875-2	17.00
1/4	1/2	2	1/4	RS650-2500-1	17.50
1/4	3/4	2 1/2	1/4	RS650-2500-2	20.34
5/16	7/16	2	5/16	RS650-3125-1	25.14
5/16	13/16	2 1/2	5/16	RS650-3125-2	27.89
3/8	1/2	2	3/8	RS650-3750-1	30.51
3/8	1	2 1/2	3/8	RS650-3750-2	34.20
1/2	5/8	2 1/2	1/2	RS650-5000-1	42.10
1/2	1 1/4	3	1/2	RS650-5000-2	46.75
5/8	3/4	3	5/8	RS650-6250-1	86.41
5/8	1 5/8	3 1/2	5/8	RS650-6250-2	96.96
3/4	1	3	3/4	RS650-7500-1	111.17
3/4	1 5/8	4	3/4	RS650-7500-2	124.63
1	1 1/4	4	1	RS650-1000-1	175.54
1	2	4	1	RS650-1000-2	197.11

Phone: 610-326-2866



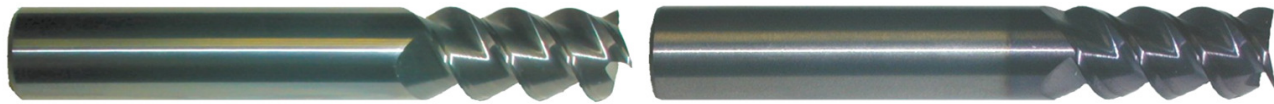
Tolerances:
Cutting Dia.: +0.000/-0.002
Shank Dia.: +0.0000/-0.0005

3-Flute Standard, 60 Degree Helix

Series RS660

Three Flute, Single End, 60 degree Helix
Center Cutting

Micro-Grain, Solid Carbide



Size	LOC	OAL	Shank Diameter	EDP Number	Price	EDP Number	Price AlTiN
1/8	1/2	1-1/2	1/8	RS660-1250	6.38	RS660-1250-ALTIN	7.98
3/16	5/8	2	3/16	RS660-1875	9.32	RS660-1875-ALTIN	11.12
1/4	3/4	2-1/2	1/4	RS660-2500	12.03	RS660-2500-ALTIN	15.25
5/16	13/16	2-1/2	5/16	RS660-3125	14.79	RS660-3125-ALTIN	19.08
3/8	7/8	2-1/2	3/8	RS660-3750	19.91	RS660-3750-ALTIN	24.20
7/16	1	2-3/4	7/16	RS660-4375	26.55	RS660-4375-ALTIN	33.80
1/2	1	3	1/2	RS660-5000	34.90	RS660-5000-ALTIN	42.15
5/8	1-1/4	3-1/2	5/8	RS660-6250	56.84	RS660-6250-ALTIN	66.28
3/4	1-1/2	4	3/4	RS660-7500	85.91	RS660-7500-ALTIN	97.90
1	1-1/2	4	1	RS660-1000	157.77	RS660-1000-ALTIN	173.36

Phone: 610-326-2866



Tolerances:
Cutting Dia.: +0.000/-0.002
Shank Dia.: +0.0000/-0.0005

2-Flute, Long, Std. & Ball Nose

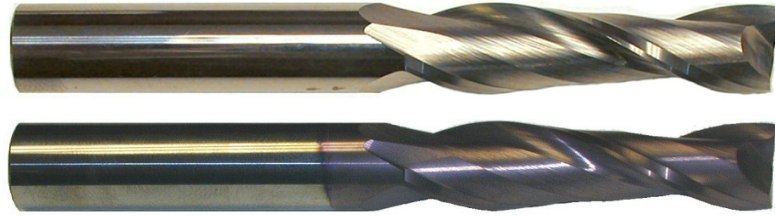
Series RS662/662-BN

Two Flute, Single End Std. & Ball Nose
Center Cutting

Micro-Grain, Solid Carbide



Produces the Cutting Edge for Industry



Size	LOC	OAL	Shank Diameter	EDP Number	Price	EDP Number	Price AlTiN
1/8	3/4	2-1/4	1/8	RS662-1250	9.79	RS662-1250-ALTIN	12.68
3/16	3/4	2-1/4	3/16	RS662-1875	12.30	RS662-1875-ALTIN	14.85
1/4	1-1/8	3	1/4	RS662-2500	16.39	RS662-2500-ALTIN	20.93
5/16	1-1/8	3	5/16	RS662-3125	18.60	RS662-3125-ALTIN	24.04
3/8	1-1/8	3	3/8	RS662-3750	21.30	RS662-3750-ALTIN	27.75
7/16	2	4	7/16	RS662-4375	33.60	RS662-4375-ALTIN	41.63
1/2	2	4	1/2	RS662-5000	39.60	RS662-5000-ALTIN	49.01
5/8	2-1/4	5	5/8	RS662-6250	85.65	RS662-6250-ALTIN	100.99
3/4	2-1/4	5	3/4	RS662-7500	118.28	RS662-7500-ALTIN	145.46
1	2-1/4	5	1	RS662-1000	161.96	RS662-1000-ALTIN	182.18



Size	LOC	OAL	Shank Diameter	EDP Number	Price	EDP Number	Price AlTiN
1/8	3/4	2-1/4	1/8	RS662-1250-BN	11.59	RS662-1250-BN-ATN	14.93
3/16	3/4	2-1/4	3/16	RS662-1875-BN	13.39	RS662-1875-BN-ATN	17.18
1/4	1-1/8	3	1/4	RS662-2500-BN	18.75	RS662-2500-BN-ATN	23.29
5/16	1-1/8	3	5/16	RS662-3125-BN	22.05	RS662-3125-BN-ATN	28.39
3/8	1-1/8	3	3/8	RS662-3750-BN	25.61	RS662-3750-BN-ATN	32.74
7/16	2	4	7/16	RS662-4375-BN	42.64	RS662-4375-BN-ATN	50.66
1/2	2	4	1/2	RS662-5000-BN	44.10	RS662-5000-BN-ATN	53.51
5/8	2-1/4	5	5/8	RS662-6250-BN	100.95	RS662-6250-BN-ATN	112.69
3/4	2-1/4	5	3/4	RS662-7500-BN	139.91	RS662-7500-BN-ATN	153.86
1	2-1/4	5	1	RS662-1000-BN	276.86	RS662-1000-BN-ATN	297.08

Phone: 610-326-2866



Tolerances:
Cutting Dia.: +0.000/-0.002
Shank Dia.: +0.0000/-0.0005

4-Flute, Long, Std. & Ball Nose

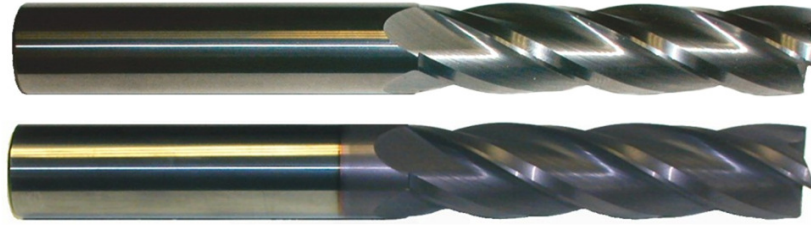
Series RS664/664-BN

Four Flute, Single End Std. & Ball Nose
Center Cutting

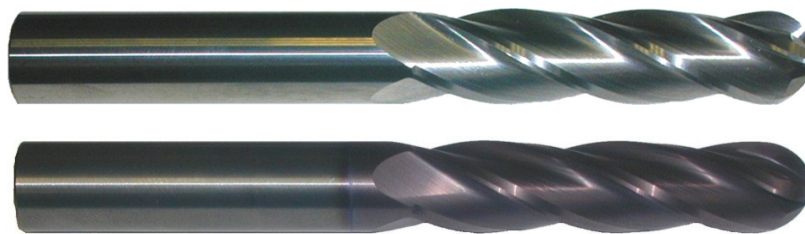
Micro-Grain, Solid Carbide



Produces the Cutting Edge for Industry



Size	LOC	OAL	Shank Diameter	EDP Number	Price	EDP Number	Price AlTiN
1/8	3/4	2-1/4	1/8	RS664-1250	9.79	RS664-1250-ALTIN	12.68
3/16	3/4	2-1/4	3/16	RS664-1875	12.30	RS664-1875-ALTIN	14.85
1/4	1-1/8	3	1/4	RS664-2500	16.39	RS664-2500-ALTIN	20.93
5/16	1-1/8	3	5/16	RS664-3125	18.60	RS664-3125-ALTIN	24.04
3/8	1-1/8	3	3/8	RS664-3750	21.30	RS664-3750-ALTIN	27.75
7/16	2	4	7/16	RS664-4375	33.60	RS664-4375-ALTIN	41.63
1/2	2	4	1/2	RS664-5000	39.60	RS664-5000-ALTIN	49.01
5/8	2-1/4	5	5/8	RS664-6250	85.65	RS664-6250-ALTIN	100.99
3/4	2-1/4	5	3/4	RS664-7500	118.28	RS664-7500-ALTIN	145.46
1	2-1/4	5	1	RS664-1000	161.96	RS664-1000-ALTIN	199.20



Size	LOC	OAL	Shank Diameter	EDP Number	Price	EDP Number	Price AlTiN
1/8	3/4	2-1/4	1/8	RS664-1250-BN	11.59	RS664-1250-BN-ATN	14.93
3/16	3/4	2-1/4	3/16	RS664-1875-BN	13.39	RS664-1875-BN-ATN	17.18
1/4	1-1/8	3	1/4	RS664-2500-BN	18.75	RS664-2500-BN-ATN	23.29
5/16	1-1/8	3	5/16	RS664-3125-BN	22.05	RS664-3125-BN-ATN	28.39
3/8	1-1/8	3	3/8	RS664-3750-BN	25.61	RS664-3750-BN-ATN	32.74
7/16	2	4	7/16	RS664-4375-BN	42.64	RS664-4375-BN-ATN	52.84
1/2	2	4	1/2	RS664-5000-BN	44.10	RS664-5000-BN-ATN	53.51
5/8	2-1/4	5	5/8	RS664-6250-BN	100.95	RS664-6250-BN-ATN	121.58
3/4	2-1/4	5	3/4	RS664-7500-BN	139.91	RS664-7500-BN-ATN	168.86
1	2-1/4	5	1	RS664-1000-BN	276.86	RS664-1000-BN-ATN	324.41

Phone: 610-326-2866



Tolerances:
Cutting Dia.: +0.000/-0.002
Shank Dia.: +0.0000/-0.0005

2-Flute, Long Shank, Std. & Ball Nose

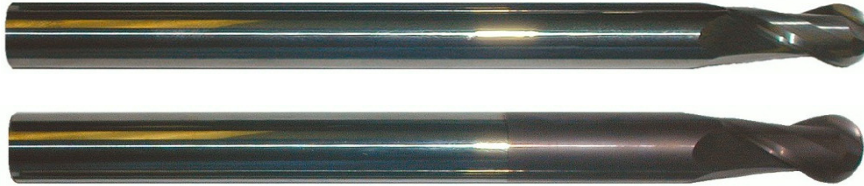
Series RS672/672-BN

Two Flute, Single End Std. & Ball Nose
Center Cutting

Micro-Grain, Solid Carbide



Size	LOC	OAL	Shank Diameter	EDP Number	Price	EDP Number	Price AlTiN
1/4	3/4	4	1/4	RS672-2500	18.08	RS672-2500-ALTIN	22.64
5/16	3/4	4	5/16	RS672-3125	23.36	RS672-3125-ALTIN	29.11
3/8	1	6	3/8	RS672-3750	39.74	RS672-3750-ALTIN	48.78
1/2	1	6	1/2	RS672-5000	63.12	RS672-5000-ALTIN	74.28
5/8	1-1/4	6	5/8	RS672-6250	99.01	RS672-6250-ALTIN	111.16
3/4	1-1/2	6	3/4	RS672-7500	129.09	RS672-7500-ALTIN	143.70
1	1-1/2	6	1	RS672-1000	227.20	RS672-1000-ALTIN	247.82



Size	LOC	OAL	Shank Diameter	EDP Number	Price	EDP Number	Price AlTiN
1/4	3/4	4	1/4	RS672-2500-BN	20.50	RS672-2500-BN-ATN	25.05
5/16	3/4	4	5/16	RS672-3125-BN	26.44	RS672-3125-BN-ATN	32.18
3/8	1	6	3/8	RS672-3750-BN	43.70	RS672-3750-BN-ATN	52.72
1/2	1	6	1/2	RS672-5000-BN	72.00	RS672-5000-BN-ATN	83.17
5/8	1-1/4	6	5/8	RS672-6250-BN	113.41	RS672-6250-BN-ATN	125.57
3/4	1-1/2	6	3/4	RS672-7500-BN	146.97	RS672-7500-BN-ATN	161.59
1	1-1/2	6	1	RS672-1000-BN	259.58	RS672-1000-BN-ATN	280.22

Phone: 610-326-2866



Tolerances:
Cutting Dia.: +0.000/-0.002
Shank Dia.: +0.0000/-0.0005

4-Flute, Long Shank, Std. & Ball Nose

Series RS674/674-BN

Four Flute, Single End Std. & Ball Nose
Center Cutting

Micro-Grain, Solid Carbide



Size	LOC	OAL	Shank Diameter	EDP Number	Price	EDP Number	Price AlTiN
1/4	3/4	4	1/4	RS674-2500	18.08	RS674-2500-ALTIN	22.64
5/16	3/4	4	5/16	RS674-3125	23.36	RS674-3125-ALTIN	29.11
3/8	1	6	3/8	RS674-3750	39.74	RS674-3750-ALTIN	48.78
1/2	1	6	1/2	RS674-5000	63.12	RS674-5000-ALTIN	74.28
5/8	1-1/4	6	5/8	RS674-6250	99.01	RS674-6250-ALTIN	111.16
3/4	1-1/2	6	3/4	RS674-7500	129.09	RS674-7500-ALTIN	143.70
1	1-1/2	6	1	RS674-1000	227.20	RS674-1000-ALTIN	247.82



Size	LOC	OAL	Shank Diameter	EDP Number	Price	EDP Number	Price AlTiN
1/4	3/4	4	1/4	RS674-2500-BN	20.50	RS674-2500-BN-ATN	25.05
5/16	3/4	4	5/16	RS674-3125-BN	26.44	RS674-3125-BN-ATN	32.18
3/8	1	6	3/8	RS674-3750-BN	43.70	RS674-3750-BN-ATN	52.72
1/2	1	6	1/2	RS674-5000-BN	72.00	RS674-5000-BN-ATN	83.17
5/8	1-1/4	6	5/8	RS674-6250-BN	113.41	RS674-6250-BN-ATN	125.57
3/4	1-1/2	6	3/4	RS674-7500-BN	146.97	RS674-7500-BN-ATN	161.59
1	1-1/2	6	1	RS674-1000-BN	259.58	RS674-1000-BN-ATN	280.22

Phone: 610-326-2866



Tolerances:
Cutting Dia.: +0.000/-0.002
Shank Dia.: +0.0000/-0.0005

2-Flute, Extra Long, Std. & Ball Nose

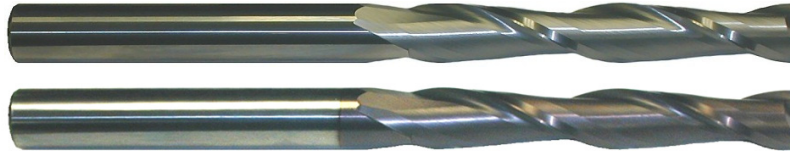
Series RS682/682-BN

Two Flute, Single End Std. & Ball Nose
Center Cutting

Micro-Grain, Solid Carbide



Produces the Cutting Edge for Industry



Size	LOC	OAL	Shank Diameter	EDP Number	Price	EDP Number	Price AlTiN
1/8	1	3	1/8	RS682-1250	10.95	RS682-1250-ALTIN	14.29
3/16	1-1/8	3	3/16	RS682-1875	11.89	RS682-1875-ALTIN	15.34
1/4	1-1/2	4	1/4	RS682-2500	17.85	RS682-2500-ALTIN	22.69
5/16	1-5/8	4	5/16	RS682-3125	22.84	RS682-3125-ALTIN	28.65
3/8	1-3/4	4	3/8	RS682-3750	26.06	RS682-3750-ALTIN	33.00
7/16	3	6	7/16	RS682-4375	53.18	RS682-4375-ALTIN	64.65
1/2	3	6	1/2	RS682-5000	63.04	RS682-5000-ALTIN	73.99
5/8	3	6	5/8	RS682-6250	92.40	RS682-6250-ALTIN	105.11
3/4	3	6	3/4	RS682-7500	138.00	RS682-7500-ALTIN	160.80
1	3	6	1	RS682-1000	233.18	RS682-1000-ALTIN	255.08



Size	LOC	OAL	Shank Diameter	EDP Number	Price	EDP Number	Price AlTiN
1/8	1	3	1/8	RS682-1250-BN	13.05	RS682-1250-BN-ATN	16.69
3/16	1-1/8	3	3/16	RS682-1875-BN	15.64	RS682-1875-BN-ATN	18.49
1/4	1-1/2	4	1/4	RS682-2500-BN	22.80	RS682-2500-BN-ATN	25.65
5/16	1-5/8	4	5/16	RS682-3125-BN	27.56	RS682-3125-BN-ATN	33.38
3/8	1-3/4	4	3/8	RS682-3750-BN	29.66	RS682-3750-BN-ATN	35.89
7/16	3	6	7/16	RS682-4375-BN	62.78	RS682-4375-BN-ATN	72.15
1/2	3	6	1/2	RS682-5000-BN	67.28	RS682-5000-BN-ATN	82.43
5/8	3	6	5/8	RS682-6250-BN	105.56	RS682-6250-BN-ATN	118.24
3/4	3	6	3/4	RS682-7500-BN	149.70	RS682-7500-BN-ATN	164.81
1	3	6	1	RS682-1000-BN	267.08	RS682-1000-BN-ATN	288.98

Phone: 610-326-2866



Tolerances:
Cutting Dia.: +0.000/-0.002
Shank Dia.: +0.0000/-0.0005

4-Flute, Extra Long, Std. & Ball Nose

Series RS684/684-BN

Four Flute, Single End Std. & Ball Nose
Center Cutting

Micro-Grain, Solid Carbide



Produces the Cutting Edge for Industry



Size	LOC	OAL	Shank Diameter	EDP Number	Price	EDP Number	Price AlTiN
1/8	1	3	1/8	RS684-1250	10.95	RS684-1250-ALTIN	14.29
3/16	1-1/8	3	3/16	RS684-1875	11.89	RS684-1875-ALTIN	15.34
1/4	1-1/2	4	1/4	RS684-2500	17.85	RS684-2500-ALTIN	22.69
5/16	1-5/8	4	5/16	RS684-3125	22.84	RS684-3125-ALTIN	28.65
3/8	1-3/4	4	3/8	RS684-3750	26.06	RS684-3750-ALTIN	33.00
7/16	3	6	7/16	RS684-4375	53.18	RS684-4375-ALTIN	64.65
1/2	3	6	1/2	RS684-5000	63.04	RS684-5000-ALTIN	73.99
5/8	3	6	5/8	RS684-6250	92.40	RS684-6250-ALTIN	108.26
3/4	3	6	3/4	RS684-7500	138.00	RS684-7500-ALTIN	160.80
3/4	4	7	3/4	RS684-7501	236.85	RS684-7501-ALTIN	254.66
1	3	6	1	RS684-1000	233.18	RS684-1000-ALTIN	273.08
1	4	7	1	RS684-1001	305.66	RS684-1001-ALTIN	357.56



Size	LOC	OAL	Shank Diameter	EDP Number	Price	EDP Number	Price AlTiN
1/8	1	3	1/8	RS684-1250-BN	13.05	RS684-1250-BN-ATN	16.69
3/16	1-1/8	3	3/16	RS684-1875-BN	15.64	RS684-1875-BN-ATN	18.49
1/4	1-1/2	4	1/4	RS684-2500-BN	22.80	RS684-2500-BN-ATN	25.65
5/16	1-5/8	4	5/16	RS684-3125-BN	27.56	RS684-3125-BN-ATN	33.90
3/8	1-3/4	4	3/8	RS684-3750-BN	29.66	RS684-3750-BN-ATN	36.56
7/16	3	6	7/16	RS684-4375-BN	62.78	RS684-4375-BN-ATN	76.76
1/2	3	6	1/2	RS684-5000-BN	67.28	RS684-5000-BN-ATN	82.43
5/8	3	6	5/8	RS684-6250-BN	105.56	RS684-6250-BN-ATN	123.64
3/4	3	6	3/4	RS684-7500-BN	149.70	RS684-7500-BN-ATN	192.60
3/4	4	7	3/4	RS684-7501-BN	247.69	RS684-7501-BN-ATN	264.08
1	3	6	1	RS684-1000-BN	267.08	RS684-1000-BN-ATN	327.71
1	4	7	1	RS684-1001-BN	324.60	RS684-1001-BN-ATN	366.64

Phone: 610-326-2866



Tolerances:
Cutting Dia.: +0.000/-0.002
Shank Dia.: +0.0000/-0.0005

2-Flute for Plastic Milling

Series RS152

Two Flute, Single End Plastic Cutting
Center Cutting

Micro-Grain, Solid Carbide



Produces the Cutting Edge for Industry



Size	LOC	OAL	Shank Diameter	EDP Number	Price
3/32	9/64	1 1/2	1/8	RS152-0938-S	16.78
3/32	9/32	2 1/4	1/8	RS152-0938-1	17.33
1/8	3/8	2 1/4	1/8	RS152-1250-1	17.23
1/8	5/8	2 1/4	1/8	RS152-1250-2	18.89
5/32	3/4	3	3/16	RS152-1562-2	29.45
3/16	1/2	2 1/2	3/16	RS152-1875-1	18.23
3/16	5/8	2 1/2	1/4	RS152-1875-2	27.78
3/16	1	3	1/4	RS152-1875-3	34.45
1/4	7/8	3	1/4	RS152-2500-1	24.46
1/4	1 1/4	3	1/4	RS152-2500-2	30.63
5/16	7/8	3	3/8	RS152-3125-1	34.73
5/16	1 3/4	4	3/8	RS152-3125-2	44.45
3/8	7/8	3	3/8	RS152-3750-1	33.22
3/8	1 1/2	4	3/8	RS152-3750-2	42.59
3/8	1 1/16	3	3/8	RS152-3750-3	38.23
7/16	1 3/4	4	1/2	RS152-4375-2	68.34
1/2	1 1/4	4	1/2	RS152-5000-1	64.77
1/2	1 3/4	4	1/2	RS152-5000-2	73.00
1/2	2 1/8	5	1/2	RS152-5000-3	95.60
1/2	2 1/2	5	1/2	RS152-5000-4	107.71
5/8	1 1/2	4	5/8	RS152-6250-1	80.05
5/8	2 1/4	5	5/8	RS152-6250-2	141.65
3/4	1 1/2	4	3/4	RS152-7500-1	98.18
3/4	2 1/4	5	3/4	RS152-7500-2	118.95
3/4	3	6	3/4	RS152-7500-3	157.41
1	1 1/2	4	1	RS152-1000-1	180.84
1	3	6	1	RS152-1000-2	312.18

Phone: 610-326-2866



O-Flute for Plastic Milling

Series RS151

O-flute Downcut Router
Center Cutting

Micro-Grain, Solid Carbide



Size	LOC	OAL	Shank Diameter	EDP Number	Price
1/4	3/4	2 1/2	1/4	RS151-2500	21.06
3/8	7/8	3	3/8	RS151-3750	33.92

Series RS161

Single Flute Straight Router



Size	LOC	OAL	Shank Diameter	EDP Number	Price
1/4	1/2	2 1/2	1/4	RS161-2500	24.85
3/8	5/8	3	3/8	RS161-3750	37.03
1/2	3/4	3 1/2	1/2	RS161-5000	49.96

Series RS171

O-flute Upcut Router



Size	LOC	OAL	Shank Diameter	EDP Number	Price
1/4	3/4	2 1/2	1/4	RS171-2500	21.06
3/8	7/8	3	3/8	RS171-3750	33.92

Phone: 610-326-2866



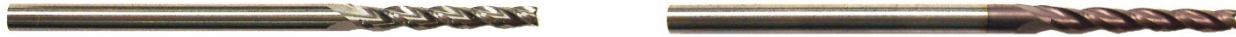
3-Flute Tapered End Mills

Series RS7000

Three Flute, Single End

Tapers are in Degrees per side

Micro-Grain, Solid Carbide



Taper	Tip Diameter	LOC	OAL	Shank Diameter	EDP Number	Price	EDP Number	Price AlTiN
1/2°	3/32	3/4	2-1/4	1/8	RS7005-63	23.68	RS7005-63-ALTIN	25.75
	1/8	3/4	2-1/2	1/4	RS7005-83	26.84	RS7005-83-ALTIN	30.06
	1/8	1	3	1/4	RS7005-84	32.50	RS7005-84-ALTIN	35.72
	3/16	3/4	2-1/2	1/4	RS7005-123	26.84	RS7005-123-ALTIN	30.06
	3/16	1-1/4	3	1/4	RS7005-125	33.79	RS7005-125-ALTIN	37.02
	1/4	3/4	2-1/2	3/8	RS7005-163	38.71	RS7005-163-ALTIN	43.00
	1/4	1-1/4	3	3/8	RS7005-165	41.18	RS7005-165-ALTIN	45.46
1°	3/32	1/2	2-1/4	1/8	RS7010-62	24.33	RS7010-62-ALTIN	26.39
	3/32	1	3	1/4	RS7010-64	27.72	RS7010-64-ALTIN	30.94
	1/8	3/4	2-1/2	1/4	RS7010-83	30.67	RS7010-83-ALTIN	33.89
	1/8	1	3	1/4	RS7010-84	32.50	RS7010-84-ALTIN	35.72
	1/8	1-1/2	3	1/4	RS7010-86	36.73	RS7010-86-ALTIN	39.95
	3/16	3/4	2-1/2	1/4	RS7010-123	30.67	RS7010-123-ALTIN	33.89
	3/16	1-1/4	3	1/4	RS7010-125	35.06	RS7010-125-ALTIN	38.29
	3/16	1-3/4	4	1/4	RS7010-127	45.83	RS7010-127-ALTIN	50.13
	1/4	3/4	2-1/2	3/8	RS7010-163	38.71	RS7010-163-ALTIN	43.00
	1/4	1-1/4	3	3/8	RS7010-165	43.30	RS7010-165-ALTIN	47.59
1/4	2	4	3/8	RS7010-168	59.70	RS7010-168-ALTIN	65.12	
1-1/2°	3/32	1	3	1/4	RS7015-64	27.72	RS7015-64-ALTIN	30.94
	1/8	3/4	2-1/2	1/4	RS7015-83	30.67	RS7015-83-ALTIN	33.89
	1/8	1-1/2	3	1/4	RS7015-86	37.00	RS7015-86-ALTIN	40.23
	3/16	1-1/4	3	3/8	RS7015-125	41.18	RS7015-125-ALTIN	45.46
	3/16	1-3/4	3-1/2	3/8	RS7015-127	43.77	RS7015-127-ALTIN	49.17
	1/4	3/4	2-1/2	3/8	RS7015-163	34.85	RS7015-163-ALTIN	39.15
1/4	1-1/4	3	3/8	RS7015-165	43.30	RS7015-165-ALTIN	47.59	
2°	3/32	3/4	2-1/2	1/4	RS7020-63	29.35	RS7020-63-ALTIN	32.57
	3/32	1	3	1/4	RS7020-64	31.83	RS7020-64-ALTIN	35.05
	1/8	3/4	2-1/2	1/4	RS7020-83	30.67	RS7020-83-ALTIN	33.89
	1/8	1-1/4	3	1/4	RS7020-85	33.14	RS7020-85-ALTIN	36.36
	3/16	3/4	2-1/2	1/4	RS7020-123	31.62	RS7020-123-ALTIN	34.84
	3/16	1-1/4	3	3/8	RS7020-125	36.65	RS7020-125-ALTIN	40.95
	3/16	1-3/4	3-1/2	3/8	RS7020-127	47.34	RS7020-127-ALTIN	52.76
	1/4	3/4	2-1/2	3/8	RS7020-163	38.71	RS7020-163-ALTIN	43.00
	1/4	1-1/4	3	3/8	RS7020-165	43.30	RS7020-165-ALTIN	47.59
	1/4	2	4	1/2	RS7020-168	62.33	RS7020-168-ALTIN	70.43

Phone: 610-326-2866



Tolerances:
Cutting Dia.: +0.000/-0.002
Shank Dia.: +0.0000/-0.0005

3-Flute Tapered End Mills

Series RS7000

Three Flute, Single End

Tapers are in Degrees per side

Micro-Grain, Solid Carbide



Taper	Tip Diameter	LOC	OAL	Shank Diameter	EDP Number	Price	EDP Number	Price AlTiN
3°	3/32	1	3	1/4	RS7030-64	31.52	RS7030-64-ALTIN	34.75
	3/32	1-1/2	3	1/4	RS7030-66	37.00	RS7030-66-ALTIN	40.23
	1/8	3/4	2-1/2	1/4	RS7030-83	30.35	RS7030-83-ALTIN	33.57
	1/8	1	3	1/4	RS7030-84	32.17	RS7030-84-ALTIN	35.39
	1/8	1-1/2	3-1/2	3/8	RS7030-86	43.77	RS7030-86-ALTIN	49.17
	1/8	2	3-1/2	3/8	RS7030-88	52.61	RS7030-88-ALTIN	58.02
	5/32	1-1/4	3	3/8	RS7030-105	41.18	RS7030-105-ALTIN	45.46
	5/32	1-3/4	3-1/2	3/8	RS7030-107	51.83	RS7030-107-ALTIN	57.24
	3/16	3/4	2-1/2	3/8	RS7030-123	38.71	RS7030-123-ALTIN	43.00
	3/16	1-1/4	3	3/8	RS7030-125	43.30	RS7030-125-ALTIN	47.59
	1/4	3/4	2-1/2	3/8	RS7030-163	38.71	RS7030-163-ALTIN	43.00
	1/4	1-3/16	3	3/8	RS7030-165	43.30	RS7030-165-ALTIN	47.59
	1/4	2	4	1/2	RS7030-168	62.33	RS7030-168-ALTIN	70.43
4°	3/32	1	3	1/4	RS7040-64	27.72	RS7040-64-ALTIN	30.94
	1/8	3/4	2-1/2	1/4	RS7040-83	30.35	RS7040-83-ALTIN	33.57
	1/8	1	3	3/8	RS7040-84	33.75	RS7040-84-ALTIN	38.04
	3/16	3/4	2-1/2	3/8	RS7040-123	38.71	RS7040-123-ALTIN	43.00
	3/16	1-1/4	3	3/8	RS7040-125	43.30	RS7040-125-ALTIN	47.59
	1/4	3/4	2-1/2	3/8	RS7040-163	38.71	RS7040-163-ALTIN	43.00
	1/4	1-1/4	4	1/2	RS7040-165	62.33	RS7040-165-ALTIN	70.43
5°	3/32	3/4	2-1/2	1/4	RS7050-63	31.96	RS7050-63-ALTIN	35.18
	3/32	1	3	3/8	RS7050-64	39.87	RS7050-64-ALTIN	44.16
	3/32	1-1/2	3-1/2	3/8	RS7050-66	43.77	RS7050-66-ALTIN	49.17
	1/8	11/16	2-1/2	1/4	RS7050-83	28.09	RS7050-83-ALTIN	31.31
	1/8	1	3	3/8	RS7050-84	41.18	RS7050-84-ALTIN	45.46
	1/8	1-7/16	3-1/2	3/8	RS7050-86	43.77	RS7050-86-ALTIN	49.17
	3/16	3/4	2-1/2	3/8	RS7050-123	38.71	RS7050-123-ALTIN	43.00
	3/16	1-1/4	3	1/2	RS7050-125	60.65	RS7050-125-ALTIN	67.90
	1/4	3/4	2-1/2	1/2	RS7050-163	46.06	RS7050-163-ALTIN	53.30
	1/4	1	3	1/2	RS7050-164	51.75	RS7050-164-ALTIN	58.99
	1/4	1-1/4	4	1/2	RS7050-165	62.33	RS7050-165-ALTIN	70.43
	1/4	2	5	5/8	RS7050-168	79.40	RS7050-168-ALTIN	91.27

Phone: 610-326-2866



Tolerances:
Cutting Dia.: +0.000/-0.002
Shank Dia.: +0.0000/-0.0005

3-Flute Tapered End Mills

Series RS7000

Three Flute, Single End

Tapers are in Degrees per side

Micro-Grain, Solid Carbide



Taper	Tip Diameter	LOC	OAL	Shank Diameter	EDP Number	Price	EDP Number	Price AlTiN
7°	3/32	1	3	3/8	RS7070-64	40.83	RS7070-64-ALTIN	45.12
	1/8	1/2	2-1/2	3/8	RS7070-82	37.43	RS7070-82-ALTIN	41.72
	1/8	3/4	2-1/2	3/8	RS7070-83	40.02	RS7070-83-ALTIN	44.30
	1/8	1	3	3/8	RS7070-84	43.30	RS7070-84-ALTIN	47.59
	1/8	1-1/2	4	1/2	RS7070-86	56.02	RS7070-86-ALTIN	64.11
	5/32	3/4	2-1/2	3/8	RS7070-103	40.02	RS7070-103-ALTIN	44.30
	3/16	1-1/4	4	1/2	RS7070-125	62.33	RS7070-125-ALTIN	70.43
	1/4	3/4	2-1/2	1/2	RS7070-163	53.47	RS7070-163-ALTIN	60.71
	1/4	1-1/4	3-1/2	5/8	RS7070-165	70.59	RS7070-165-ALTIN	80.03
10°	3/32	7/16	2-1/2	1/4	RS7100-62	26.84	RS7100-62-ALTIN	30.06
	3/32	1-1/2	3-1/2	5/8	RS7100-66	70.59	RS7100-66-ALTIN	80.03
	1/8	11/16	2-1/2	3/8	RS7100-83	40.02	RS7100-83-ALTIN	44.30
	1/8	1	3	1/2	RS7100-84	60.65	RS7100-84-ALTIN	67.90
	1/8	1-1/4	3-1/2	5/8	RS7100-85	70.59	RS7100-85-ALTIN	80.03
	3/16	1-1/4	3-1/2	5/8	RS7100-125	70.59	RS7100-125-ALTIN	80.03
	1/4	3/4	3	5/8	RS7100-163	67.74	RS7100-163-ALTIN	75.33
	1/4	1	3	5/8	RS7100-164	69.31	RS7100-164-ALTIN	76.90
15°	1/8	3/8	2-1/2	3/8	RS7150-1015	47.47	RS7150-1015-ALTIN	51.76
	1/8	1	3	3/4	RS7150-84	146.10	RS7150-84-ALTIN	155.29
	3/16	1	3	3/4	RS7150-124	153.87	RS7150-124-ALTIN	163.06
	1/4	1	3	3/4	RS7150-164	159.02	RS7150-164-ALTIN	168.21
20°	1/8	11/32	2-1/2	3/8	RS7200-815	51.31	RS7200-815-ALTIN	55.60
25°	1/8	3/8	3	1/2	RS7250-815	57.87	RS7250-815-ALTIN	65.12
30°	3/32	11/32	3	1/2	RS7300-615	57.87	RS7300-615-ALTIN	65.12

Phone: 610-326-2866



Tolerances:
Cutting Dia.: +0.000/-0.002
Shank Dia.: +0.0000/-0.0005

2-Flute Coarse Pitch Aluminum Roughers

Series RS802-C

Two Flute, Single End, Roughing Mills
Center Cutting, Coarse Pitch
Micro-Grain, Solid Carbide



Size	LOC	OAL	Shank Diameter	EDP Number	Price	EDP Number	Price ZrN
1/4	1/2	2	1/4	RS802-2500-1C	16.74	RS802-2500-1C-ZRN	19.66
1/4	3/4	2-1/2	1/4	RS802-2500-2C	17.82	RS802-2500-2C-ZRN	21.26
1/4	1-1/8	3	1/4	RS802-2500-3C	26.27	RS802-2500-3C-ZRN	29.71
1/4	3/4	4	1/4	RS802-2500-4C	25.78	RS802-2500-4C-ZRN	30.38
5/16	1/2	2	5/16	RS802-3125-1C	20.66	RS802-3125-1C-ZRN	24.79
5/16	13/16	2-1/2	5/16	RS802-3125-2C	22.04	RS802-3125-2C-ZRN	26.64
5/16	1-1/8	3	5/16	RS802-3125-3C	32.46	RS802-3125-3C-ZRN	37.06
5/16	3/4	4	5/16	RS802-3125-4C	31.95	RS802-3125-4C-ZRN	37.75
3/8	5/8	2	3/8	RS802-3750-1C	27.28	RS802-3750-1C-ZRN	31.42
3/8	7/8	2-1/2	3/8	RS802-3750-2C	29.10	RS802-3750-2C-ZRN	33.70
3/8	1-1/8	3	3/8	RS802-3750-3C	42.87	RS802-3750-3C-ZRN	47.47
3/8	1	4	3/8	RS802-3750-4C	42.51	RS802-3750-4C-ZRN	48.31
1/2	5/8	2-1/2	1/2	RS802-5000-1C	43.40	RS802-5000-1C-ZRN	51.16
1/2	1	3	1/2	RS802-5000-2C	46.33	RS802-5000-2C-ZRN	54.09
1/2	2	4	1/2	RS802-5000-3C	68.51	RS802-5000-3C-ZRN	77.19
1/2	1	6	1/2	RS802-5000-4C	73.87	RS802-5000-4C-ZRN	85.13
5/8	3/4	3	5/8	RS802-6250-1C	69.24	RS802-6250-1C-ZRN	77.37
5/8	1-1/4	3-1/2	5/8	RS802-6250-2C	73.72	RS802-6250-2C-ZRN	83.84
5/8	2-1/4	5	5/8	RS802-6250-3C	109.85	RS802-6250-3C-ZRN	122.56
5/8	1-1/4	6	5/8	RS802-6250-4C	108.59	RS802-6250-4C-ZRN	120.86
3/4	1	3	3/4	RS802-7500-1C	94.35	RS802-7500-1C-ZRN	104.20
3/4	1-1/2	4	3/4	RS802-7500-2C	104.13	RS802-7500-2C-ZRN	116.98
3/4	2-1/4	5	3/4	RS802-7500-3C	149.87	RS802-7500-3C-ZRN	164.04
3/4	1-1/2	6	3/4	RS802-7500-4C	148.23	RS802-7500-4C-ZRN	163.00
1	1	3	1	RS802-1000-1C	174.67	RS802-1000-1C-ZRN	186.40
1	1-1/2	4	1	RS802-1000-2C	189.35	RS802-1000-2C-ZRN	206.06
1	2-1/4	5	1	RS802-1000-3C	269.79	RS802-1000-3C-ZRN	288.99
1	1-1/2	6	1	RS802-1000-4C	266.33	RS802-1000-4C-ZRN	287.16

Phone: 610-326-2866



Tolerances:
Cutting Dia.: +0.000/-0.003
Shank Dia.: +0.0000/-0.0005

3-Flute Coarse Pitch Aluminum Roughers

Series RS803-C

Three Flute, Single End, Roughing Mills

Center Cutting, Coarse Pitch

Micro-Grain, Solid Carbide



Produces the Cutting Edge for Industry



Size	LOC	OAL	Shank Diameter	EDP Number	Price	EDP Number	Price ZrN
1/4	1/2	2	1/4	RS803-2500-1C	16.74	RS803-2500-1C-ZRN	19.66
1/4	3/4	2-1/2	1/4	RS803-2500-2C	17.82	RS803-2500-2C-ZRN	21.26
1/4	1-1/8	3	1/4	RS803-2500-3C	26.27	RS803-2500-3C-ZRN	29.71
1/4	3/4	4	1/4	RS803-2500-4C	25.78	RS803-2500-4C-ZRN	30.38
5/16	1/2	2	5/16	RS803-3125-1C	20.66	RS803-3125-1C-ZRN	24.79
5/16	13/16	2-1/2	5/16	RS803-3125-2C	22.04	RS803-3125-2C-ZRN	26.64
5/16	1-1/8	3	5/16	RS803-3125-3C	32.46	RS803-3125-3C-ZRN	37.06
5/16	3/4	4	5/16	RS803-3125-4C	31.95	RS803-3125-4C-ZRN	37.75
3/8	5/8	2	3/8	RS803-3750-1C	27.28	RS803-3750-1C-ZRN	31.42
3/8	7/8	2-1/2	3/8	RS803-3750-2C	29.10	RS803-3750-2C-ZRN	33.70
3/8	1-1/8	3	3/8	RS803-3750-3C	42.87	RS803-3750-3C-ZRN	47.47
3/8	1	4	3/8	RS803-3750-4C	42.51	RS803-3750-4C-ZRN	48.31
1/2	5/8	2-1/2	1/2	RS803-5000-1C	43.40	RS803-5000-1C-ZRN	51.16
1/2	1	3	1/2	RS803-5000-2C	46.33	RS803-5000-2C-ZRN	54.09
1/2	2	4	1/2	RS803-5000-3C	68.51	RS803-5000-3C-ZRN	77.19
1/2	1	6	1/2	RS803-5000-4C	73.87	RS803-5000-4C-ZRN	85.13
5/8	3/4	3	5/8	RS803-6250-1C	69.24	RS803-6250-1C-ZRN	77.37
5/8	1-1/4	3-1/2	5/8	RS803-6250-2C	73.72	RS803-6250-2C-ZRN	83.84
5/8	2-1/4	5	5/8	RS803-6250-3C	109.85	RS803-6250-3C-ZRN	122.56
5/8	1-1/4	6	5/8	RS803-6250-4C	108.59	RS803-6250-4C-ZRN	120.86
3/4	1	3	3/4	RS803-7500-1C	94.35	RS803-7500-1C-ZRN	104.20
3/4	1-1/2	4	3/4	RS803-7500-2C	104.13	RS803-7500-2C-ZRN	116.98
3/4	2-1/4	5	3/4	RS803-7500-3C	149.87	RS803-7500-3C-ZRN	164.04
3/4	1-1/2	6	3/4	RS803-7500-4C	148.23	RS803-7500-4C-ZRN	163.00
1	1	3	1	RS803-1000-1C	174.67	RS803-1000-1C-ZRN	186.40
1	1-1/2	4	1	RS803-1000-2C	189.35	RS803-1000-2C-ZRN	206.06
1	2-1/4	5	1	RS803-1000-3C	269.79	RS803-1000-3C-ZRN	288.99
1	1-1/2	6	1	RS803-1000-4C	266.33	RS803-1000-4C-ZRN	287.16

Phone: 610-326-2866



Tolerances:

Cutting Dia.: +0.000/-0.003

Shank Dia.: +0.0000/-0.0005

4 Flute Coarse Pitch Roughers

Series RS804-C

Four Flute, Single End, Roughing Mills
Center Cutting, Coarse Pitch

Micro-Grain, Solid Carbide



Produces the Cutting Edge for Industry



Size	LOC	OAL	Shank Diameter	EDP Number	Price	EDP Number	Price AlTiN
1/4	1/2	2	1/4	RS804-2500-1C	16.74	RS804-2500-1C-ALTIN	19.46
1/4	3/4	2-1/2	1/4	RS804-2500-2C	17.82	RS804-2500-2C-ALTIN	21.04
1/4	1-1/8	3	1/4	RS804-2500-3C	26.27	RS804-2500-3C-ALTIN	29.49
1/4	1-1/2	4	1/4	RS804-2500-4C	31.73	RS804-2500-4C-ALTIN	36.01
5/16	1/2	2	5/16	RS804-3125-1C	20.66	RS804-3125-1C-ALTIN	24.51
5/16	13/16	2-1/2	5/16	RS804-3125-2C	22.04	RS804-3125-2C-ALTIN	26.32
5/16	1-1/8	3	5/16	RS804-3125-3C	32.46	RS804-3125-3C-ALTIN	36.74
5/16	1-5/8	4	5/16	RS804-3125-4C	39.21	RS804-3125-4C-ALTIN	44.63
3/8	5/8	2	3/8	RS804-3750-1C	27.28	RS804-3750-1C-ALTIN	31.14
3/8	7/8	2-1/2	3/8	RS804-3750-2C	29.10	RS804-3750-2C-ALTIN	33.39
3/8	1-1/8	3	3/8	RS804-3750-3C	42.87	RS804-3750-3C-ALTIN	47.16
3/8	1-3/4	4	3/8	RS804-3750-4C	52.07	RS804-3750-4C-ALTIN	57.47
1/2	5/8	2-1/2	1/2	RS804-5000-1C	43.40	RS804-5000-1C-ALTIN	50.65
1/2	1	3	1/2	RS804-5000-2C	46.33	RS804-5000-2C-ALTIN	53.57
1/2	2	4	1/2	RS804-5000-3C	68.51	RS804-5000-3C-ALTIN	76.60
1/2	3	6	1/2	RS804-5000-4C	86.17	RS804-5000-4C-ALTIN	96.69
5/8	3/4	3	5/8	RS804-6250-1C	69.24	RS804-6250-1C-ALTIN	76.83
5/8	1-1/4	3-1/2	5/8	RS804-6250-2C	73.72	RS804-6250-2C-ALTIN	83.17
5/8	2-1/4	5	5/8	RS804-6250-3C	109.85	RS804-6250-3C-ALTIN	121.71
5/8	3	6	5/8	RS804-6250-4C	131.63	RS804-6250-4C-ALTIN	143.09
3/4	1	3	3/4	RS804-7500-1C	94.35	RS804-7500-1C-ALTIN	103.54
3/4	1-1/2	4	3/4	RS804-7500-2C	104.13	RS804-7500-2C-ALTIN	116.12
3/4	2-1/4	5	3/4	RS804-7500-3C	149.87	RS804-7500-3C-ALTIN	163.09
3/4	3	6	3/4	RS804-7500-4C	179.61	RS804-7500-4C-ALTIN	193.39
1	1	3	1	RS804-1000-1C	174.67	RS804-1000-1C-ALTIN	185.62
1	1-1/2	4	1	RS804-1000-2C	189.35	RS804-1000-2C-ALTIN	204.94
1	2-1/4	5	1	RS804-1000-3C	269.79	RS804-1000-3C-ALTIN	287.71
1	3	6	1	RS804-1000-4C	323.53	RS804-1000-4C-ALTIN	342.97

Phone: 610-326-2866



Tolerances:

Cutting Dia.: +0.000/-0.003

Shank Dia.: +0.0000/-0.0005

4 Flute Fine Pitch Roughers

Series RS804-F

Four Flute, Single End, Roughing Mills
Center Cutting, Fine Pitch

Micro-Grain, Solid Carbide



Produces the Cutting Edge for Industry



Size	LOC	OAL	Shank Diameter	EDP Number	Price	EDP Number	Price AlTiN
3/8	5/8	2	3/8	RS804-3750-1F	27.28	RS804-3750-1F-ALTIN	31.14
3/8	7/8	2-1/2	3/8	RS804-3750-2F	29.10	RS804-3750-2F-ALTIN	33.39
3/8	1-1/8	3	3/8	RS804-3750-3F	42.87	RS804-3750-3F-ALTIN	47.16
3/8	1-3/4	4	3/8	RS804-3750-4F	52.07	RS804-3750-4F-ALTIN	57.47
1/2	5/8	2-1/2	1/2	RS804-5000-1F	43.40	RS804-5000-1F-ALTIN	50.65
1/2	1	3	1/2	RS804-5000-2F	46.33	RS804-5000-2F-ALTIN	53.57
1/2	2	4	1/2	RS804-5000-3F	68.51	RS804-5000-3F-ALTIN	76.60
1/2	3	6	1/2	RS804-5000-4F	86.17	RS804-5000-4F-ALTIN	96.69
5/8	3/4	3	5/8	RS804-6250-1F	69.24	RS804-6250-1F-ALTIN	76.83
5/8	1-1/4	3-1/2	5/8	RS804-6250-2F	73.72	RS804-6250-2F-ALTIN	83.17
5/8	2-1/4	5	5/8	RS804-6250-3F	109.85	RS804-6250-3F-ALTIN	121.71
5/8	3	6	5/8	RS804-6250-4F	131.63	RS804-6250-4F-ALTIN	143.09
3/4	1	3	3/4	RS804-7500-1F	94.35	RS804-7500-1F-ALTIN	103.54
3/4	1-1/2	4	3/4	RS804-7500-2F	104.13	RS804-7500-2F-ALTIN	116.12
3/4	2-1/4	5	3/4	RS804-7500-3F	149.87	RS804-7500-3F-ALTIN	163.09
3/4	3	6	3/4	RS804-7500-4F	179.61	RS804-7500-4F-ALTIN	193.39
1	1	3	1	RS804-1000-1F	174.67	RS804-1000-1F-ALTIN	185.62
1	1-1/2	4	1	RS804-1000-2F	189.35	RS804-1000-2F-ALTIN	204.94
1	2-1/4	5	1	RS804-1000-3F	269.79	RS804-1000-3F-ALTIN	287.71
1	3	6	1	RS804-1000-4F	323.53	RS804-1000-4F-ALTIN	342.97

Phone: 610-326-2866



Tolerances:

Cutting Dia.: +0.000/-0.003

Shank Dia.: +0.0000/-0.0005

Thread Mills - Standard Length

Series RSTM

Multi-Flute Thread Mills

Stocked With AlTiN Coating Only

Micro-Grain, Solid Carbide



Produces the Cutting Edge for Industry



Size	LOC	OAL	Shank Diameter	Min Diameter	EDP Number	Price AlTiN
8-32	1/4	2	1/8	0.115	RSTM125-32	81.19
10-24	5/16	2	3/16	0.120	RSTM140-24	81.19
10-32	5/16	2	3/16	0.120	RSTM140-32	81.19
1/4-20	1/2	2 1/2	3/16	0.180	RSTM190-20	91.84
1/4-28	1/2	2 1/2	3/16	0.180	RSTM190-28	91.84
5/16-18	5/8	2 1/2	1/4	0.240	RSTM245-18	108.60
5/16-24	5/8	2 1/2	1/4	0.240	RSTM245-24	108.60
3/8-16	3/4	3	5/16	0.290	RSTM300-16	129.38
3/8-24	3/4	3	5/16	0.290	RSTM300-24	129.38
7/16-14	7/8	3	3/8	0.340	RSTM350-14	139.54
7/16-20	7/8	3	3/8	0.340	RSTM350-20	139.54
1/2-13	7/8	3 1/2	3/8	0.350	RSTM400-13	139.54
1/2-20	7/8	3 1/2	3/8	0.350	RSTM400-20	139.54
9/16-12	7/8	3 1/2	1/2	0.370	RSTM450-12	139.54
9/16-18	7/8	3 1/2	1/2	0.370	RSTM450-18	139.54
5/8-11	1 1/4	3 1/2	1/2	0.470	RSTM490-11	174.45
5/8-18	1 1/4	3 1/2	1/2	0.470	RSTM490-18	174.45
3/4-10	1 1/4	3 1/2	1/2	0.495	RSTM620-10	174.45
3/4-16	1 1/4	3 1/2	1/2	0.495	RSTM620-16	174.45
7/8-9	1 1/4	3 1/2	5/8	0.620	RSTM745-9	218.29
7/8-14	1 1/4	3 1/2	5/8	0.620	RSTM745-14	218.29
1-8	1 3/8	4	3/4	0.620	RSTM745-8	218.29

More Styles and Sizes are available

Phone: 610-326-2866



Tolerances:

Shank Dia.: +0.0000/-0.0005

Solid Carbide Chamfer Tools

Series CH

Two & Four Flute, Single and Double
60, 82, 90, 100 & 120 Degree (Included Angle)

Micro-Grain, Solid Carbide



Angle	Flutes	OAL	Shank Diameter	EDP Number	Price	EDP Number	Price AITiN
60 Deg	2	1-1/2	1/8	CH60.125-2FL D/E	17.33	CH60.125-2FL-ALTIN	20.66
	2	2	3/16	CH60.187-2FL D/E	23.85	CH60.187-2FL-ALTIN	28.46
	2	2-1/2	1/4	CH60.250-2FL D/E	30.68	CH60.250-2FL-ALTIN	36.30
	2	2-1/2	3/8	CH60.375-2FL D/E	47.66	CH60.375-2FL-ALTIN	56.78
	4	3	1/2	CH60.500-4FL D/E	78.83	CH60.500-4FL-ALTIN	94.01
82 Deg	2	1-1/2	1/8	CH82.125-2FL D/E	17.33	CH82.125-2FL-ALTIN	20.66
	2	2	3/16	CH82.187-2FL D/E	23.85	CH82.187-2FL-ALTIN	28.46
	2	2-1/2	1/4	CH82.250-2FL D/E	30.56	CH82.250-2FL-ALTIN	36.30
	2	2-1/2	3/8	CH82.375-2FL D/E	47.85	CH82.375-2FL-ALTIN	56.78
	4	3	1/2	CH82.500-4FL D/E	78.83	CH82.500-4FL-ALTIN	94.01
90 Deg	2	1-1/2	1/8	CH90.125-2FL D/E	17.33	CH90.125-2FL-ALTIN	20.66
	2	2	3/16	CH90.187-2FL D/E	23.85	CH90.187-2FL-ALTIN	28.46
	2	2-1/2	1/4	CH90.250-2FL D/E	30.68	CH90.250-2FL-ALTIN	36.30
	2	2-1/2	3/8	CH90.375-2FL D/E	47.85	CH90.375-2FL-ALTIN	56.78
	4	3	1/2	CH90.500-4FL D/E	78.83	CH90.500-4FL-ALTIN	94.01
100 Deg	2	1-1/2	1/8	CH100.125-2FL D/E	17.33	CH100.125-2FL-ALTIN	20.48
	2	2	3/16	CH100.187-2FL D/E	23.85	CH100.187-2FL-ALTIN	27.64
	2	2-1/2	1/4	CH100.250-2FL D/E	30.56	CH100.250-2FL-ALTIN	35.10
	2	2-1/2	3/8	CH100.375-2FL D/E	47.66	CH100.375-2FL-ALTIN	54.11
	4	3	1/2	CH100.500-4FL D/E	78.83	CH100.500-4FL-ALTIN	94.01
120 Deg	2	1-1/2	1/8	CH120.125-2FL D/E	17.33	CH120.125-2FL-ALTIN	20.66
	2	2	3/16	CH120.187-2FL D/E	23.85	CH120.187-2FL-ALTIN	28.46
	2	2-1/2	1/4	CH120.250-2FL D/E	30.56	CH120.250-2FL-ALTIN	36.30
	2	2-1/2	3/8	CH120.375-2FL D/E	47.66	CH120.375-2FL-ALTIN	56.78
	4	3	1/2	CH120.500-4FL D/E	78.83	CH120.500-4FL-ALTIN	94.01

Phone: 610-326-2866



Tolerances:
Shank Dia.: +0.0000/-0.0005

Carbide Reamers

Series TC



Micro-Grain, Solid Carbide

Size	EDP Number	Price	Size	EDP Number	Price	Size	EDP Number	Price	Size	EDP Number	Price
0.1760	TC87222	\$ 31.05	0.2200	TC87277	\$ 37.54	0.2670	TC87332	\$ 50.14	0.3150	TC87387	\$ 50.14
0.1770	TC87223	\$ 28.88	0.2210	TC87278	\$ 35.10	0.2680	TC87333	\$ 50.14	0.3160	TC87388	\$ 55.76
0.1772	TC87224	\$ 32.21	0.2220	TC87279	\$ 37.54	0.2690	TC87334	\$ 50.14	0.3170	TC87389	\$ 55.76
0.1780	TC87225	\$ 31.05	0.2230	TC87280	\$ 37.54	0.2700	TC87335	\$ 50.14	0.3180	TC87390	\$ 55.76
0.1790	TC87226	\$ 31.05	0.2240	TC87281	\$ 37.54	0.2710	TC87336	\$ 49.88	0.3190	TC87391	\$ 55.76
0.1800	TC87227	\$ 28.88	0.2250	TC87282	\$ 37.54	0.2720	TC87337	\$ 50.14	0.3200	TC87392	\$ 55.76
0.1810	TC87228	\$ 31.05	0.2260	TC87283	\$ 41.21	0.2730	TC87338	\$ 49.88	0.3210	TC87393	\$ 55.76
0.1820	TC87229	\$ 28.88	0.2270	TC87284	\$ 41.21	0.2740	TC87339	\$ 50.14	0.3220	TC87394	\$ 55.76
0.1830	TC87230	\$ 31.05	0.2280	TC87285	\$ 38.63	0.2750	TC87340	\$ 50.14	0.3230	TC87395	\$ 55.76
0.1840	TC87231	\$ 31.05	0.2290	TC87286	\$ 38.48	0.2756	TC87341	\$ 54.71	0.3240	TC87396	\$ 55.76
0.1850	TC87232	\$ 28.88	0.2300	TC87287	\$ 41.21	0.2760	TC87342	\$ 50.14	0.3250	TC87397	\$ 55.76
0.1855	TC87233	\$ 37.16	0.2310	TC87288	\$ 41.21	0.2770	TC87343	\$ 50.14	0.3260	TC87398	\$ 55.76
0.1860	TC87234	\$ 31.05	0.2320	TC87289	\$ 41.21	0.2780	TC87344	\$ 50.14	0.3270	TC87399	\$ 55.76
0.1865	TC87235	\$ 33.41	0.2330	TC87290	\$ 41.21	0.2790	TC87345	\$ 50.14	0.3280	TC87400	\$ 55.76
0.1870	TC87236	\$ 31.05	0.2340	TC87291	\$ 41.21	0.2800	TC87346	\$ 50.14	0.3281	TC87401	\$ 56.36
0.1875	TC87237	\$ 27.94	0.2344	TC87292	\$ 37.05	0.2810	TC87347	\$ 50.14	0.3290	TC87402	\$ 55.76
0.1880	TC87238	\$ 31.05	0.2350	TC87293	\$ 41.21	0.2812	TC87348	\$ 45.11	0.3300	TC87403	\$ 55.76
0.1885	TC87239	\$ 33.41	0.2360	TC87294	\$ 41.21	0.2820	TC87349	\$ 50.14	0.3310	TC87404	\$ 55.76
0.1890	TC87240	\$ 28.88	0.2362	TC87295	\$ 39.45	0.2830	TC87350	\$ 50.14	0.3320	TC87405	\$ 55.76
0.1900	TC87241	\$ 31.05	0.2370	TC87296	\$ 41.21	0.2840	TC87351	\$ 50.14	0.3330	TC87406	\$ 55.76
0.1910	TC87242	\$ 35.10	0.2380	TC87297	\$ 41.21	0.2850	TC87352	\$ 50.14	0.3340	TC87407	\$ 55.76
0.1920	TC87243	\$ 37.54	0.2390	TC87298	\$ 41.21	0.2860	TC87353	\$ 50.14	0.3346	TC87408	\$ 55.76
0.1930	TC87244	\$ 37.54	0.2400	TC87299	\$ 41.21	0.2870	TC87354	\$ 50.14	0.3350	TC87409	\$ 55.76
0.1935	TC87245	\$ 35.10	0.2410	TC87300	\$ 41.21	0.2880	TC87355	\$ 49.88	0.3360	TC87410	\$ 55.76
0.1940	TC87246	\$ 37.54	0.2420	TC87301	\$ 41.21	0.2890	TC87356	\$ 49.88	0.3370	TC87411	\$ 55.76
0.1950	TC87247	\$ 37.54	0.2430	TC87302	\$ 41.21	0.2900	TC87357	\$ 50.14	0.3380	TC87412	\$ 55.76
0.1960	TC87248	\$ 35.10	0.2440	TC87303	\$ 41.21	0.2910	TC87358	\$ 49.88	0.3390	TC87413	\$ 56.44
0.1969	TC87249	\$ 37.54	0.2450	TC87304	\$ 41.21	0.2920	TC87359	\$ 49.88	0.3400	TC87414	\$ 55.76
0.1970	TC87250	\$ 37.54	0.2460	TC87305	\$ 41.21	0.2930	TC87360	\$ 50.14	0.3410	TC87415	\$ 55.76
0.1980	TC87251	\$ 37.54	0.2470	TC87306	\$ 41.21	0.2940	TC87361	\$ 50.14	0.3420	TC87416	\$ 55.76
0.1990	TC87252	\$ 35.10	0.2480	TC87307	\$ 41.21	0.2950	TC87362	\$ 49.88	0.3430	TC87417	\$ 55.76
0.2000	TC87253	\$ 37.54	0.2485	TC87308	\$ 46.28	0.2953	TC87363	\$ 54.49	0.3438	TC87418	\$ 56.63
0.2010	TC87254	\$ 35.10	0.2490	TC87309	\$ 41.21	0.2960	TC87364	\$ 49.88	0.3440	TC87419	\$ 55.76
0.2020	TC87255	\$ 37.54	0.2495	TC87310	\$ 43.76	0.2969	TC87365	\$ 50.14	0.3450	TC87420	\$ 55.76
0.2030	TC87256	\$ 37.54	0.2500	TC87311	\$ 37.05	0.2970	TC87366	\$ 49.88	0.3460	TC87421	\$ 55.76
0.2031	TC87257	\$ 33.86	0.2505	TC87312	\$ 43.76	0.2980	TC87367	\$ 50.14	0.3470	TC87422	\$ 55.76
0.2040	TC87258	\$ 35.10	0.2510	TC87313	\$ 41.21	0.2990	TC87368	\$ 49.88	0.3480	TC87423	\$ 55.76
0.2050	TC87259	\$ 37.54	0.2515	TC87314	\$ 51.49	0.3000	TC87369	\$ 50.14	0.3490	TC87424	\$ 55.76
0.2055	TC87260	\$ 35.10	0.2520	TC87315	\$ 41.21	0.3010	TC87370	\$ 50.14	0.3500	TC87425	\$ 55.76
0.2060	TC87261	\$ 37.54	0.2530	TC87316	\$ 41.21	0.3020	TC87371	\$ 50.14	0.3510	TC87426	\$ 60.83
0.2070	TC87262	\$ 37.54	0.2540	TC87317	\$ 41.21	0.3030	TC87372	\$ 49.88	0.3520	TC87427	\$ 60.83
0.2080	TC87263	\$ 37.54	0.2550	TC87318	\$ 41.21	0.3040	TC87373	\$ 49.88	0.3530	TC87428	\$ 60.83
0.2090	TC87264	\$ 35.10	0.2559	TC87319	\$ 43.61	0.3050	TC87374	\$ 50.14	0.3540	TC87429	\$ 60.83
0.2100	TC87265	\$ 37.54	0.2560	TC87320	\$ 50.14	0.3060	TC87375	\$ 49.88	0.3543	TC87430	\$ 63.79
0.2110	TC87266	\$ 37.54	0.2570	TC87321	\$ 50.14	0.3070	TC87376	\$ 50.14	0.3550	TC87431	\$ 60.83
0.2120	TC87267	\$ 37.54	0.2580	TC87322	\$ 50.14	0.3080	TC87377	\$ 49.88	0.3560	TC87432	\$ 60.83
0.2130	TC87268	\$ 35.10	0.2590	TC87323	\$ 50.14	0.3090	TC87378	\$ 49.88	0.3570	TC87433	\$ 60.83
0.2140	TC87269	\$ 37.54	0.2600	TC87324	\$ 50.14	0.3100	TC87379	\$ 50.14	0.3580	TC87434	\$ 60.83
0.2150	TC87270	\$ 37.54	0.2610	TC87325	\$ 50.14	0.3110	TC87380	\$ 50.14	0.3590	TC87435	\$ 62.18
0.2160	TC87271	\$ 37.54	0.2620	TC87326	\$ 50.14	0.3115	TC87381	\$ 57.26	0.3594	TC87436	\$ 60.34
0.2165	TC87272	\$ 39.79	0.2630	TC87327	\$ 50.14	0.3120	TC87382	\$ 50.14	0.3600	TC87437	\$ 60.83
0.2170	TC87273	\$ 37.54	0.2640	TC87328	\$ 50.14	0.3125	TC87383	\$ 50.14	0.3610	TC87438	\$ 60.83
0.2180	TC87274	\$ 37.54	0.2650	TC87329	\$ 50.14	0.3130	TC87384	\$ 50.14	0.3620	TC87439	\$ 60.83
0.2188	TC87275	\$ 33.86	0.2656	TC87330	\$ 45.11	0.3135	TC87385	\$ 57.26	0.3630	TC87440	\$ 60.83
0.2190	TC87276	\$ 37.54	0.2660	TC87331	\$ 50.14	0.3140	TC87386	\$ 50.14	0.3640	TC87441	\$ 60.83

Available for Delivery from stock in 24-48 hours

Carbide Reamers

Series TC



Micro-Grain, Solid Carbide

Size	EDP Number	Price	Size	EDP Number	Price	Size	EDP Number	Price	Size	EDP Number	Price
0.3650	TC87442	\$ 60.83	0.4134	TC87497	\$ 86.36	0.4610	TC87552	\$107.59			
0.3660	TC87443	\$ 60.83	0.4140	TC87498	\$ 94.76	0.4620	TC87553	\$107.59			
0.3670	TC87444	\$ 60.83	0.4150	TC87499	\$ 94.76	0.4630	TC87554	\$107.59			
0.3680	TC87445	\$ 60.83	0.4160	TC87500	\$ 94.76	0.4640	TC87555	\$107.59			
0.3690	TC87446	\$ 60.83	0.4170	TC87501	\$ 94.76	0.4650	TC87556	\$107.59			
0.3700	TC87447	\$ 60.83	0.4180	TC87502	\$ 94.76	0.4660	TC87557	\$107.59			
0.3710	TC87448	\$ 60.83	0.4190	TC87503	\$ 94.76	0.4670	TC87558	\$107.59			
0.3720	TC87449	\$ 60.83	0.4200	TC87504	\$ 94.76	0.4680	TC87559	\$108.08			
0.3730	TC87450	\$ 60.83	0.4210	TC87505	\$ 94.76	0.4688	TC87560	\$ 85.99			
0.3740	TC87451	\$ 60.83	0.4219	TC87506	\$ 78.41	0.4690	TC87561	\$113.36			
0.3745	TC87452	\$ 73.88	0.4220	TC87507	\$ 94.76	0.4700	TC87562	\$113.36			
0.3750	TC87453	\$ 60.34	0.4230	TC87508	\$ 94.76	0.4710	TC87563	\$113.36			
0.3755	TC87454	\$ 73.88	0.4240	TC87509	\$ 94.76	0.4720	TC87564	\$113.89			
0.3760	TC87455	\$ 76.80	0.4250	TC87510	\$ 94.76	0.4724	TC87565	\$109.20			
0.3765	TC87456	\$ 80.18	0.4260	TC87511	\$ 94.76	0.4730	TC87566	\$113.89			
0.3770	TC87457	\$ 76.80	0.4270	TC87512	\$ 94.76	0.4740	TC87567	\$113.36			
0.3780	TC87458	\$ 76.80	0.4280	TC87513	\$ 94.76	0.4750	TC87568	\$113.36			
0.3790	TC87459	\$ 76.43	0.4290	TC87514	\$ 94.76	0.4760	TC87569	\$113.89			
0.3800	TC87460	\$ 76.80	0.4300	TC87515	\$ 94.76	0.4770	TC87570	\$113.36			
0.3810	TC87461	\$ 76.43	0.4310	TC87516	\$ 94.76	0.4780	TC87571	\$113.36			
0.3820	TC87462	\$ 76.80	0.4320	TC87517	\$ 94.76	0.4790	TC87572	\$113.36			
0.3830	TC87463	\$ 76.43	0.4330	TC87518	\$ 94.76	0.4800	TC87573	\$113.36			
0.3840	TC87464	\$ 76.80	0.4331	TC87519	\$ 86.36	0.4810	TC87574	\$113.36			
0.3850	TC87465	\$ 76.43	0.4340	TC87520	\$ 94.76	0.4820	TC87575	\$113.36			
0.3860	TC87466	\$ 76.43	0.4350	TC87521	\$ 94.76	0.4830	TC87576	\$113.36			
0.3870	TC87467	\$ 94.76	0.4360	TC87522	\$ 94.76	0.4840	TC87577	\$113.36			
0.3880	TC87468	\$ 94.76	0.4365	TC87523	\$ 94.76	0.4844	TC87578	\$ 97.46			
0.3890	TC87469	\$ 94.76	0.4370	TC87524	\$ 94.76	0.4850	TC87579	\$113.36			
0.3900	TC87470	\$ 94.76	0.4375	TC87525	\$ 78.41	0.4860	TC87580	\$113.36			
0.3906	TC87471	\$ 94.76	0.4380	TC87526	\$ 94.76	0.4870	TC87581	\$136.69			
0.3910	TC87472	\$ 94.76	0.4385	TC87527	\$113.29	0.4880	TC87582	\$136.69			
0.3920	TC87473	\$ 94.76	0.4390	TC87528	\$ 94.76	0.4890	TC87583	\$136.69			
0.3930	TC87474	\$ 94.76	0.4400	TC87529	\$ 94.76	0.4900	TC87584	\$136.69			
0.3937	TC87475	\$ 72.19	0.4410	TC87530	\$108.08	0.4910	TC87585	\$136.69			
0.3940	TC87476	\$ 94.76	0.4420	TC87531	\$108.08	0.4920	TC87586	\$136.69			
0.3950	TC87477	\$ 94.76	0.4430	TC87532	\$108.08	0.4921	TC87587	\$136.69			
0.3960	TC87478	\$ 94.76	0.4440	TC87533	\$107.59	0.4930	TC87588	\$136.69			
0.3970	TC87479	\$ 94.76	0.4450	TC87534	\$108.08	0.4940	TC87589	\$136.69			
0.3980	TC87480	\$ 94.76	0.4460	TC87535	\$107.59	0.4950	TC87590	\$136.69			
0.3990	TC87481	\$ 94.76	0.4470	TC87536	\$107.59	0.4960	TC87591	\$136.69			
0.4000	TC87482	\$ 94.76	0.4480	TC87537	\$107.59	0.4970	TC87592	\$136.69			
0.4010	TC87483	\$ 94.76	0.4490	TC87538	\$107.59	0.4980	TC87593	\$136.69			
0.4020	TC87484	\$ 94.76	0.4500	TC87539	\$107.59	0.4990	TC87594	\$136.69			
0.4030	TC87485	\$ 94.76	0.4510	TC87540	\$107.59	0.4995	TC87595	\$136.69			
0.4040	TC87486	\$ 94.76	0.4520	TC87541	\$107.59	0.5000	TC87596	\$ 97.91			
0.4050	TC87487	\$ 94.76	0.4528	TC87542	\$107.59	0.5005	TC87597	\$136.69			
0.4060	TC87488	\$ 94.76	0.4530	TC87543	\$ 98.59	0.5010	TC87598	\$136.69			
0.4062	TC87489	\$ 69.15	0.4531	TC87544	\$ 85.99	0.5020	TC87599	\$136.69			
0.4070	TC87490	\$ 94.76	0.4540	TC87545	\$107.59						
0.4080	TC87491	\$ 94.76	0.4550	TC87546	\$107.59						
0.4090	TC87492	\$ 94.76	0.4560	TC87547	\$107.59						
0.4100	TC87493	\$ 94.76	0.4570	TC87548	\$107.59						
0.4110	TC87494	\$ 94.76	0.4580	TC87549	\$107.59						
0.4120	TC87495	\$ 94.76	0.4590	TC87550	\$107.59						
0.4130	TC87496	\$ 94.76	0.4600	TC87551	\$107.59						

Available for Delivery from stock in 24-48 hours

Speeds and Feeds

Solid Carbide Endmills



	SFM Speed	End Mill Diameter Chip Load per Tooth							
		1/8	3/16	1/4	3/8	1/2	5/8	3/4	1
<u>Non Ferrous</u>									
Aluminum Alloys	700-1800	0.0010	0.0020	0.0020	0.0030	0.0040	0.0050	0.0060	0.0070
Brass	300-450	0.0010	0.0010	0.0020	0.0025	0.0030	0.0040	0.0040	0.0050
Bronze	250-350	0.0010	0.0010	0.0020	0.0025	0.0030	0.0040	0.0040	0.0050
Copper / Copper Alloys	700-1500	0.0010	0.0020	0.0020	0.0030	0.0040	0.0050	0.0060	0.0070
Fiberglass	200-600	0.0010	0.0010	0.0020	0.0025	0.0030	0.0040	0.0040	0.0050
Graphites	200-400	0.0010	0.0030	0.0060	0.0080	0.0110	0.0130	0.0160	0.0180
Magnesium	900-1300	0.0010	0.0020	0.0020	0.0030	0.0040	0.0060	0.0080	0.0090
<u>Stainless Steel</u>									
Martensitic	200-400	0.0005	0.0010	0.0010	0.0015	0.0020	0.0030	0.0040	0.0060
Austenitic	150-300	0.0004	0.0005	0.0005	0.0010	0.0010	0.0020	0.0030	0.0050
<u>High Temp Alloys</u>									
Cobalt Based	60-100	0.0004	0.0005	0.0010	0.0010	0.0010	0.0010	0.0015	0.0020
Iron Based	80-130	0.0005	0.0005	0.0010	0.0015	0.0020	0.0025	0.0030	0.0040
Titanium Alloys	50-250	0.0005	0.0005	0.0005	0.0010	0.0010	0.0015	0.0020	0.0040
<u>Steel</u>									
High Strength	50-250	0.0005	0.0005	0.0010	0.0010	0.0010	0.0015	0.0020	0.0040
High Alloy Mold Die	100-300	0.0005	0.0005	0.0010	0.0010	0.0010	0.0015	0.0020	0.0040
Medium Alloy	150-350	0.0005	0.0005	0.0010	0.0020	0.0025	0.0035	0.0040	0.0050
Low Carbon	100-400	0.0005	0.0010	0.0015	0.0020	0.0030	0.0040	0.0050	0.0060
<u>Cast Iron</u>									
Ductile Iron	100-400	0.0005	0.0010	0.0015	0.0020	0.0020	0.0030	0.0040	0.0050
Cast Iron	100-400	0.0005	0.0010	0.0020	0.0030	0.0040	0.0050	0.0060	0.0080
Formulas									
$(SFM \times 3.82) / \text{Diameter} = \text{RPM}$									
$\text{Chip load per tooth} \times \text{number of flutes} \times \text{RPM} = \text{IPM}$									

All speed and feed recommendations should be considered only as a starting point.

Testing must be done to achieve the best results

Good machining practices should always be followed

Reduce SFM for extra long endmills

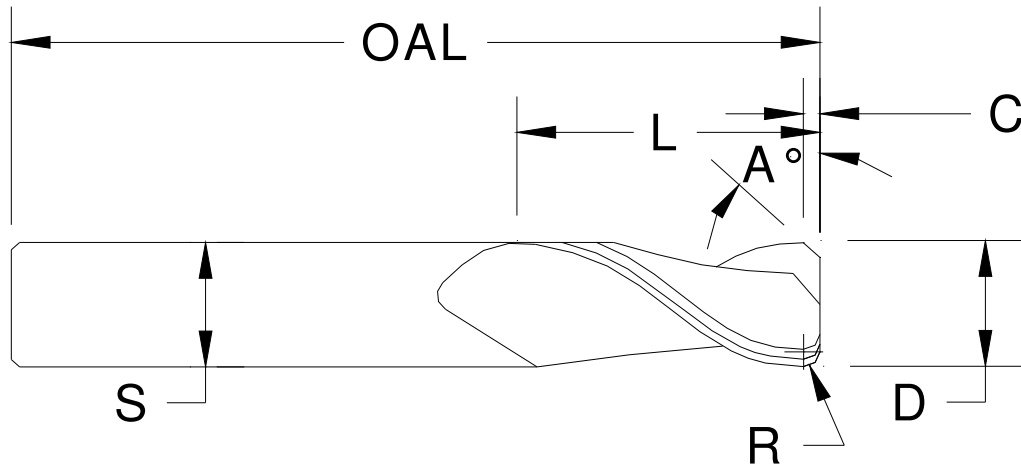
Using coated tooling will allow upto 40% faster SFM over the same uncoated tool

Corner Radius/Chamfer Quote Template

Available on std. RS series and specials.
 Center Cutting
Micro-Grain, Solid Carbide



Phone: 610-326-2866
 Fax: 610-326-5627



Required Data: (Refer to sketch above)

No. Flutes: _____	"L": _____
"S": _____	"R": _____
"D": _____	"A": _____
OAL: _____	"C": _____
	QTY: _____

Price Ea.: _____

Delivery: _____

P.O. #: _____

Co. Name: _____

Address: _____

Phone/Fax: _____ / _____

Tolerances:
 (Unless otherwise requested)
 Cutting Dia.: +0.000/-0.002
 Shank Dia.: +0.0000/-0.0005



Double Angle Shank Cutter Quote Template

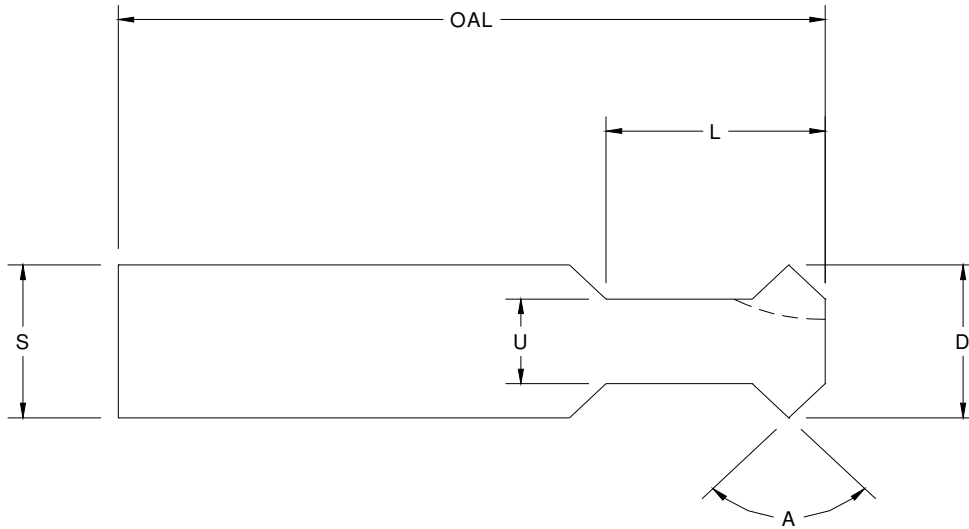


Produces the Cutting Edge for Industry

Micro-Grain, Solid Carbide

Phone: 610-326-2866

Fax: 610-326-5627



Required Data: (Refer to sketch above)

No. Flutes: _____	"L": _____
"S": _____	"U": _____
"D": _____	"A": _____
OAL: _____	QTY: _____

Price Ea.: _____

Delivery: _____

P.O. #: _____

Co.Name: _____

Address: _____

Phone/Fax: _____ / _____

Tolerances:

(Unless otherwise requested)

Cutting Dia.: +0.000/-0.002

Shank Dia.: +0.0000/-0.0005



Corner Rounding Cutter Quote Template

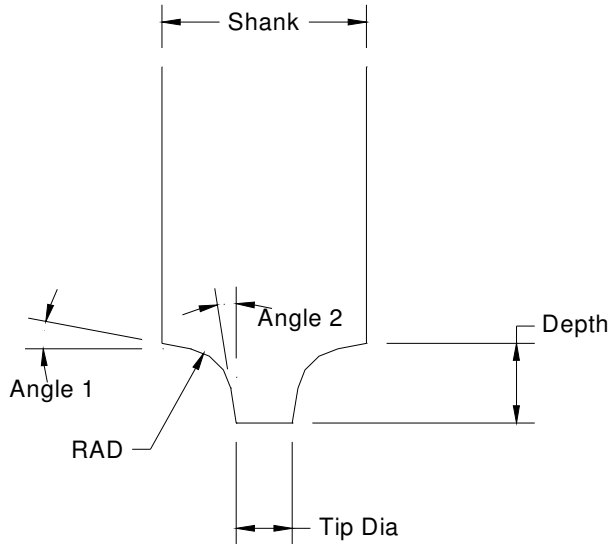


Produces the Cutting Edge for Industry

Micro-Grain, Solid Carbide

Phone: 610-326-2866

Fax: 610-326-5627



Required Data: (Refer to sketch above)

Shank: _____

Angle 1: _____

Tip Dia: _____

Angle 2: _____

Depth: _____

RAD: _____

OAL: _____

QTY: _____

D/E or S/E: _____

Price Ea.: _____

Delivery: _____

P.O. #: _____

Co. Name: _____

Address: _____

Phone/Fax: _____ / _____

Tolerances:

(Unless otherwise requested)

Cutting Dia.: +0.000/-0.002

Shank Dia.: +0.0000/-0.0005



Dovetail Cutter Quote Template



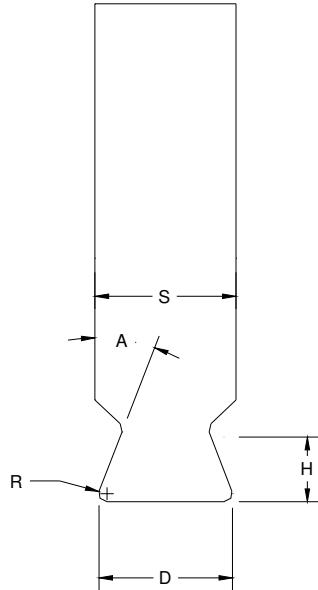
Produces the Cutting Edge for Industry

Center Cutting

Micro-Grain, Solid Carbide

Phone: 610-326-2866

Fax: 610-326-5627



Required Data: (Refer to sketch above)

No. Flutes: _____	"H": _____
"S": _____	"R": _____
"D": _____	"A": _____
OAL: _____	QTY: _____

Price Ea.: _____

Delivery: _____

P.O. #: _____

Co.Name: _____

Address: _____

Phone/Fax: _____ / _____

Tolerances:

(Unless otherwise requested)

Cutting Dia.: +0.000/-0.002

Shank Dia.: +0.0000/-0.0005



Chamfer Cutter Quote Template

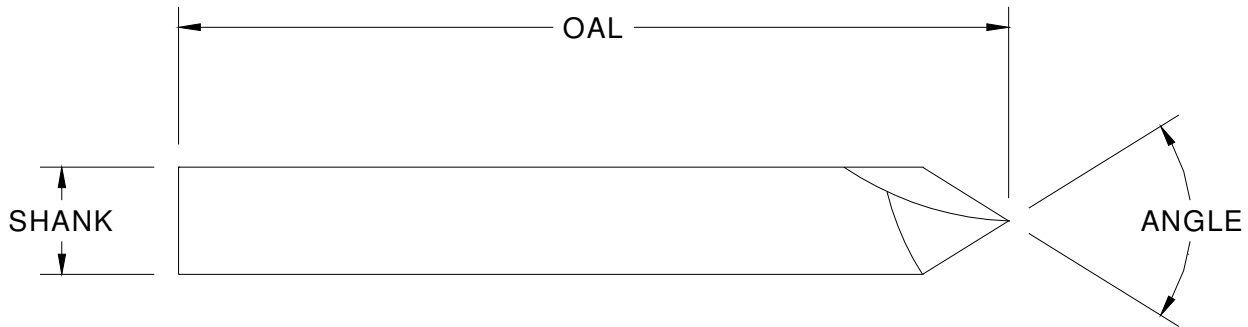


Produces the Cutting Edge for Industry

Micro-Grain, Solid Carbide

Phone: 610-326-2866

Fax: 610-326-5627



Required Data: (Refer to sketch above)

No. Flutes: _____ Angle: _____

Shank: _____ QTY: _____

OAL: _____ Circle: D/E or S/E

Tip: _____

Price Ea.: _____

Delivery: _____

P.O. #: _____

Co. Name: _____

Address: _____

Phone/Fax: _____ / _____

Tolerances:

(Unless otherwise requested)

Cutting Dia.: +0.000/-0.002

Shank Dia.: +0.0000/-0.0005



Taper End Mill Quote Template

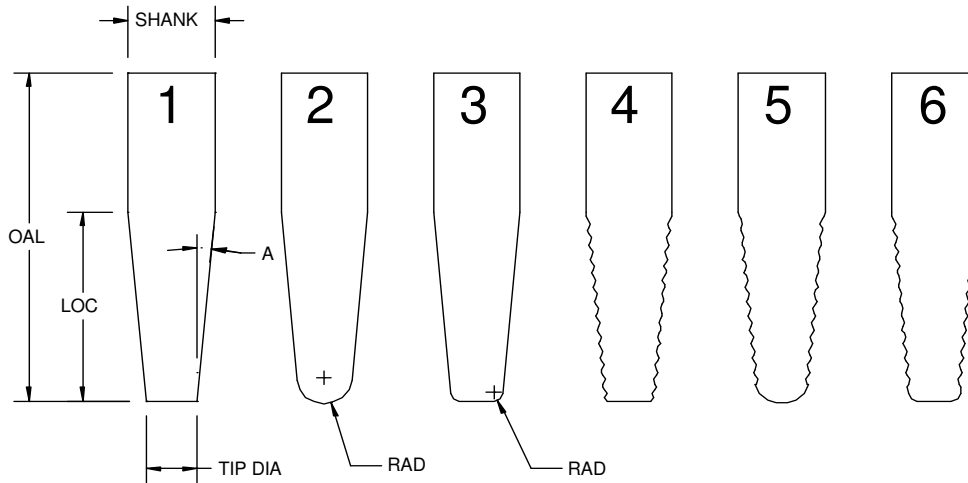


Produces the Cutting Edge for Industry

Micro-Grain, Solid Carbide

Phone: 610-326-2866

Fax: 610-326-5627



Required Data: (Refer to sketch above)

Note: Sketches 4,5 & 6 are roughers.

No. Flutes: _____

LOC: _____

Shank: _____

Tip Dia: _____

RAD: _____

"A"(per side): _____

OAL: _____

QTY: _____

Style? (1 - 6): _____

Price Ea.: _____

Delivery: _____

P.O. #: _____

Co.Name: _____

Address: _____

Phone/Fax: _____ / _____

Tolerances:

(Unless otherwise requested)

Cutting Dia.: +0.000/-0.002

Shank Dia.: +0.0000/-0.0005



"Lollipop" Cutter Quote Template



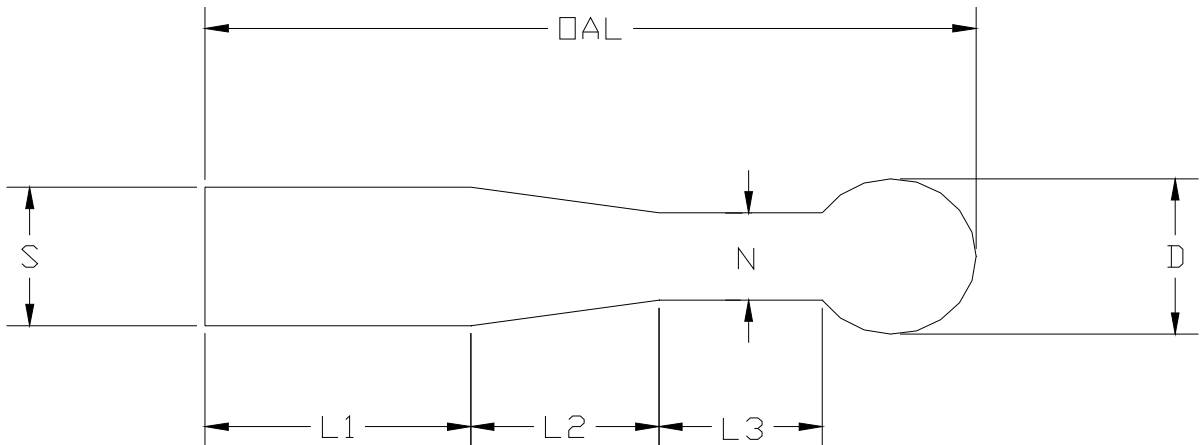
Produces the Cutting Edge for Industry

Center Cutting

Micro-Grain, Solid Carbide

Phone: 610-326-2866

Fax: 610-326-5627



Required Data: (Refer to sketch above)

No. Flutes: _____	"L1": _____
"S": _____	"L2": _____
"D": _____	"L3": _____
OAL: _____	"N": _____
	QTY: _____

Price Ea.: _____

Delivery: _____

P.O. #: _____

Co.Name: _____

Address: _____

Address: _____

Address: _____

Phone/Fax: _____ / _____

Tolerances:
 (Unless otherwise requested)
 Cutting Dia.: +0.000/-0.002
 Shank Dia.: +0.0000/-0.0005

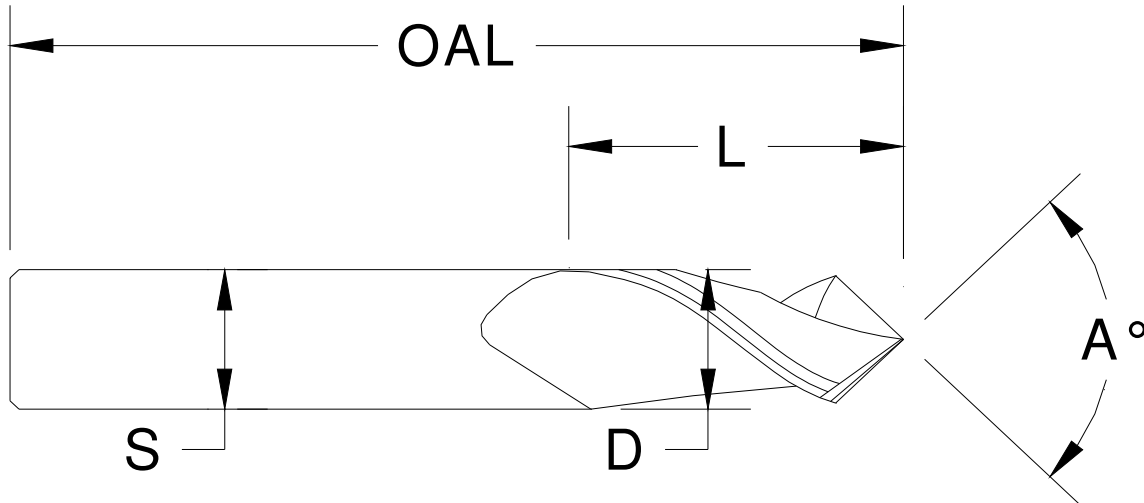


Angle Point End Mill Quote Template

Available on std. RS series and specials.
 Center Cutting
Micro-Grain, Solid Carbide



Phone: 610-326-2866
 Fax: 610-326-5627



Required Data: (Refer to sketch above)

No. Flutes: _____	"L": _____
"S": _____	"A": _____
"D": _____	QTY: _____
OAL: _____	

Price Ea.: _____

Delivery: _____

P.O. #: _____

Co.Name: _____

Address: _____

Phone/Fax: _____ / _____

Tolerances:

(Unless otherwise requested)
 Cutting Dia.: +0.000/-0.002
 Shank Dia.: +0.0000/-0.0005



Step Drill Quote Template

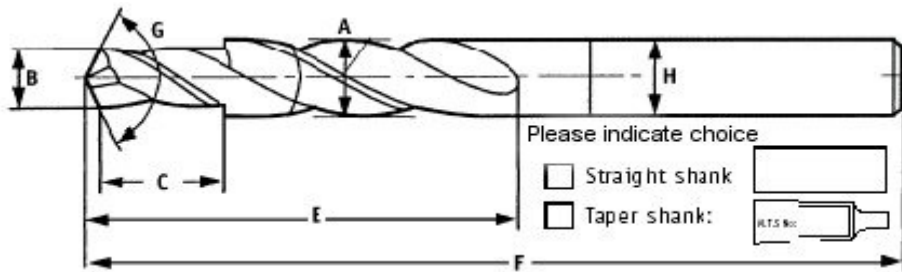
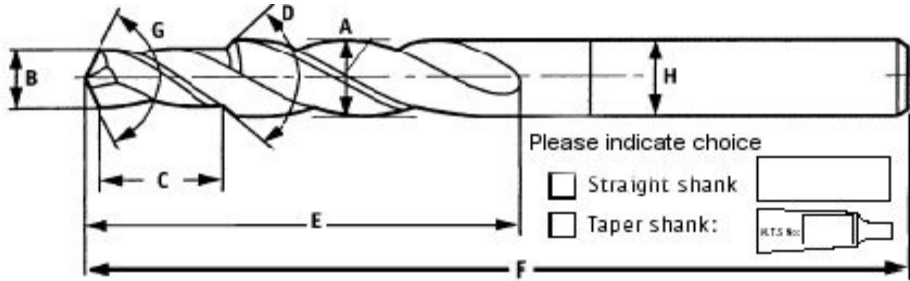


Produces the Cutting Edge for Industry

Phone: 610-326-2866
Fax: 610-326-5627

Please Specify
HSS
M42
Carbide

Thru Coolant
Yes
No



"A" Large Dia. _____
 "B" Small Dia. _____
 "C" Step Length _____
 "D" Step Angle _____
 "E" Flute Length _____
 "F" Overall Length _____
 "G" Point Angle _____
 "H" Shank Dia. _____

Razor Sharp Grinding can manufacture your standard coolant hole drills in both Inch and Metric sizes.

Does pilot cut? _____

Material to be cut? _____



Terms & Conditions

Net 30 Days

\$25.00 Minimum Order

F.O.B., Pottstown, PA

Prices Subject to change without notice.



Produces the Cutting Edge for Industry

1702 New Schuylkill Road
Pottstown, PA 19465
Phone: 610-326-2866
Fax: 610-326-5627

<http://www.razorsharpgrinding.com>

Ordering Information: All tools should be ordered by **EDP Number**, please include quantity of each; tool description is optional.

Availability: All tools listed in this catalog are stocked; tools temporarily out of stock will ship within one week.

Pricing: Prices shown are effective March 1, 2020. Any sales or any other applicable taxes on these products will be added to the purchase price and will be paid by the distributor. Specials will be quoted and quoted price shall be valid for a period of 30 days; any applicable taxes will be in addition to the quoted price.

Returned Items: Current catalog items are returnable subject to a 10% restocking charge; credit **will not** be issued for tools that have been modified, altered, coated, marked, or have in any other way been rendered "used". Returned Goods Authorization **must** be obtained from **Razor Sharp Grinding** management **Prior** to returning any goods for credit.

Specials Policy: Specials (including altered standard tooling) are not returnable for credit, and canceled special orders (including altered standard tooling) will be charged a cancellation fee proportionate to the cost incurred on the order at the time of cancellation.

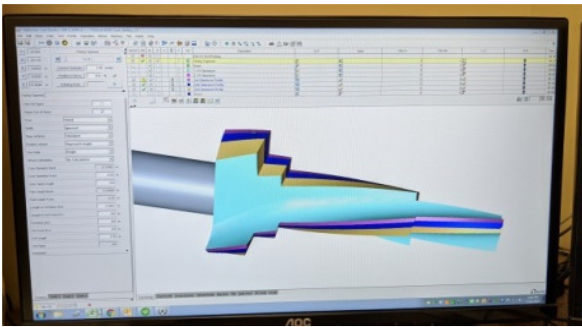
Product Warranty: **Razor Sharp Grinding** warrants any product manufactured by them to be free from defects in materials and craftsmanship, and will conform to the specifications listed in our catalog. **Razor Sharp Grinding** will repair, replace or issue credit for any product that does not conform with this warranty. The **Razor Sharp Grinding** warranty does not apply to any product which has been altered, modified, machined, misused, damaged or used beyond its normal life. No other warranties, implied or expressed, are made by **Razor Sharp Grinding**, except as already stated; no other person is authorized to alter this product warranty in any way.

Claims: Any claims for lost, damaged, or product shortages **must** be made within 10 days of invoice date.





STUDER Favorit CNC



RAZOR - SHARP GRINDING

Produces the Cutting Edge for Industry

1702 New Schuylkill Road
Pottstown, PA 19465
Phone: 610-326-2866
Fax: 610-326-5627

<http://www.razorsharpgrinding.com>

